

UTAH

STATE ROADS

STATE ROAD COMMISSION
 FEDERAL AID SYSTEM
 OTHER STATE ROADS
 SCALE 1 INCH=40 MILES

STATE OF UTAH

STATE ROAD COMMISSION

PLANS OF PROPOSED STATE ROAD

FEDERAL AID PROJECT

- AW(PE) F.A.P. No 227-A(1) ~ LENGTH 0.613 MILES
- DA-WR No 9(1) ~ LENGTH 0.613 MILES
- AW(PE) F.A.P. No 228-A(1) ~ LENGTH 2.449 MILES
- DA-WR No 7(1) ~ LENGTH 0.897 MILES
- DA-WR No 8(1) ~ LENGTH 1.810 MILES

PROJECT NO.	STATE	FED. AID DIST. NO.	FISCAL YEAR	SHEET NO.	TOTAL SHEETS
12	UTAH	227 A(1)	1942	1	8
"	"	DA-WR 9(1)	1942	1	8
"	"	228 A(1)	1942	1	7
"	"	DA-WR 8(1)	1942	1	15
"	"	DA-WR 7(1)	1942	1	9

INDEX TO SHEETS DA-WR No 7(1)

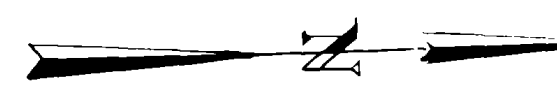
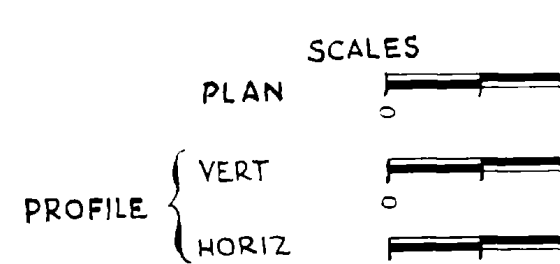
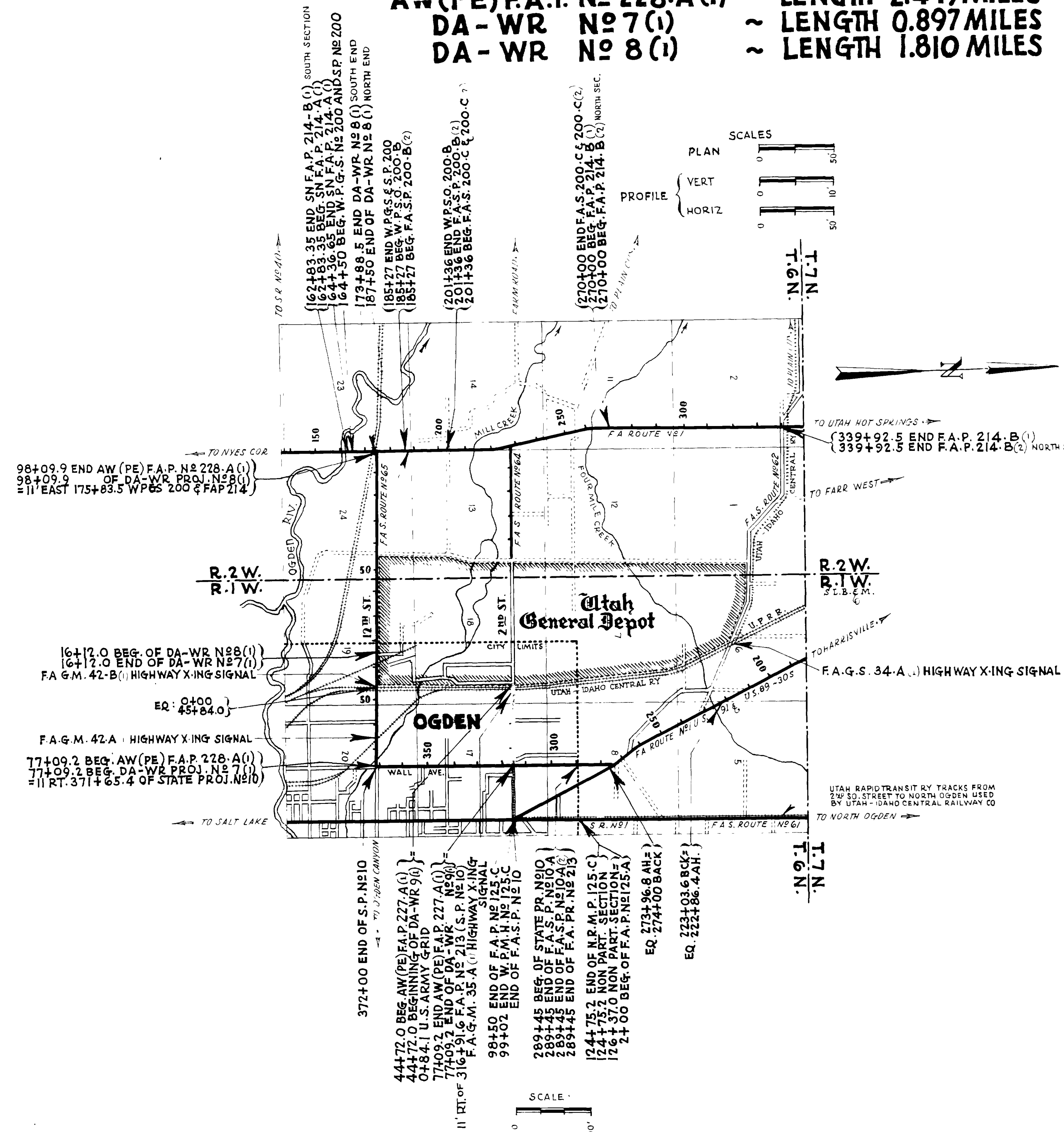
SHEET	DESCRIPTION	DRAWING NO.	STATION
1	TITLE SHEET		
2	TYPICAL SECTION		
3-4	PLAN AND PROFILE		
5-7	EXT. TO 17'-7" R.C. CONC. RIG. FR. BRIDGE	SEE 6221	77+21
8	HEADGATES AND OUTLETS	Y 224, 1, 2, 22	VARIOUS
9	F.A.P. MARKERS	M-45	
9-A	DETAIL OF TRANSITION OF ROADWAY		10+56±
1-10	X-SECTIONS		

INDEX TO SHEETS DA-WR No 9(1)

SHEET NO.	DESCRIPTION	DRAWING NO.	STATION
1	TITLE SHEET		
2	TYPICAL SECTION		
3-4	PLAN AND PROFILE		
5	STD. HEADGATES AND OUTLETS	Y-774	VARIOUS
6	24" X 105" CULV. PIPE SYPHON	E-744-L-1	61+85
6	24" X 108" " "	L-2	72+32
7-A	F.A.P. MARKERS	M-45	
8	FLASH LT. SIGNAL & ADVANCE WARNING SIGN	UPC 3766	75+38.4 76+63.5 80+00
1-9	X-SECTIONS		

INDEX TO SHEETS DA-WR No 8(1)

SHEET	DESCRIPTION	DRAWING NO.	STATION
1	TITLE SHEET		
2-24	TYPICAL SECTION		
3-6	PLAN AND PROFILE		
7-8	4' X 2' X 80" CONC. BOX CULV. & DIVERSION	E-748	81+47.6
9-10	EXTENSION TO EXISTING CULVERT	V-205	94+92
11	2 WAY DIVERSION RT. TYPE A-36	E-752	73+84.1
12-13	EXTENSION TO EXISTING CULVERT	V-224	VARIOUS
14	HEADGATES AND OUTLETS		
15-A	F.A.P. MARKERS	M-45	
18	X-SECTIONS		



APPROVED JANUARY 1942

STATE ROAD COMMISSION OF UTAH

W. Anderson
 DESIGN ENGINEER

RECOMMENDED FOR APPROVAL

DISTRICT ENGINEER
 PUBLIC ROADS ADMINISTRATION
 FEDERAL WORKS AGENCY

RECOMMENDED FOR APPROVAL

W. Anderson
 POST COMMANDER

RECOMMENDED FOR APPROVAL

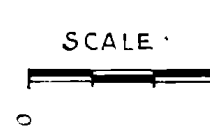
CHIEF, WESTERN REGION
 PUBLIC ROADS ADMINISTRATION
 FEDERAL WORKS AGENCY

APPROVED

COMMANDING GENERAL

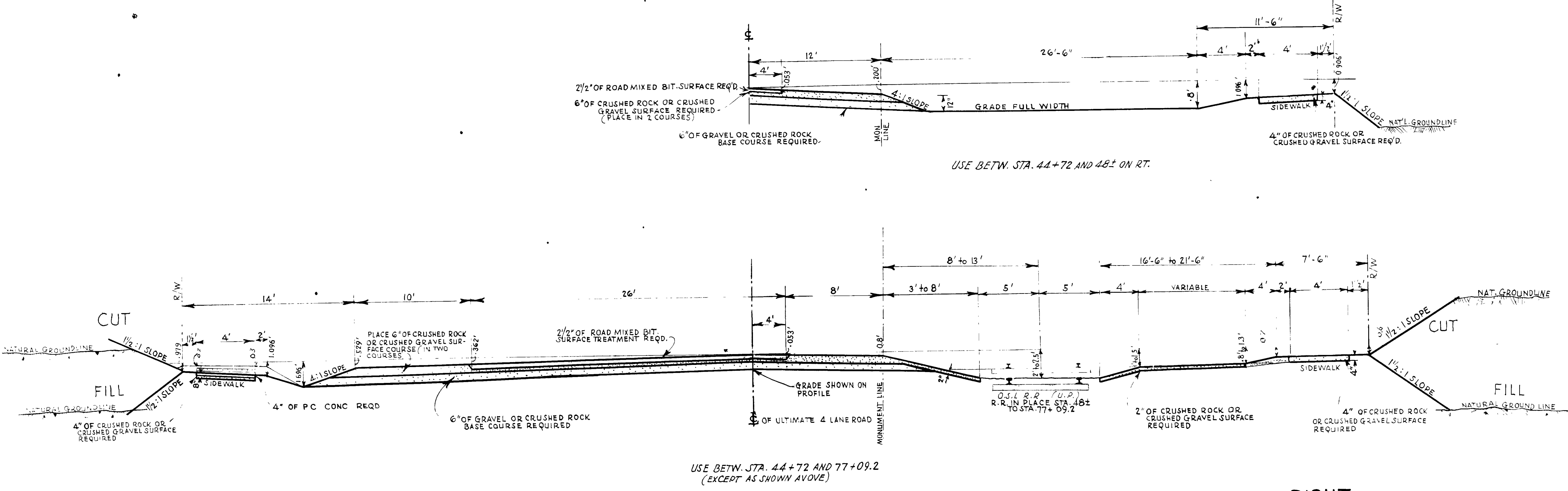
APPROVED

COMMISSIONER
 PUBLIC ROADS ADMINISTRATION
 FEDERAL WORKS AGENCY



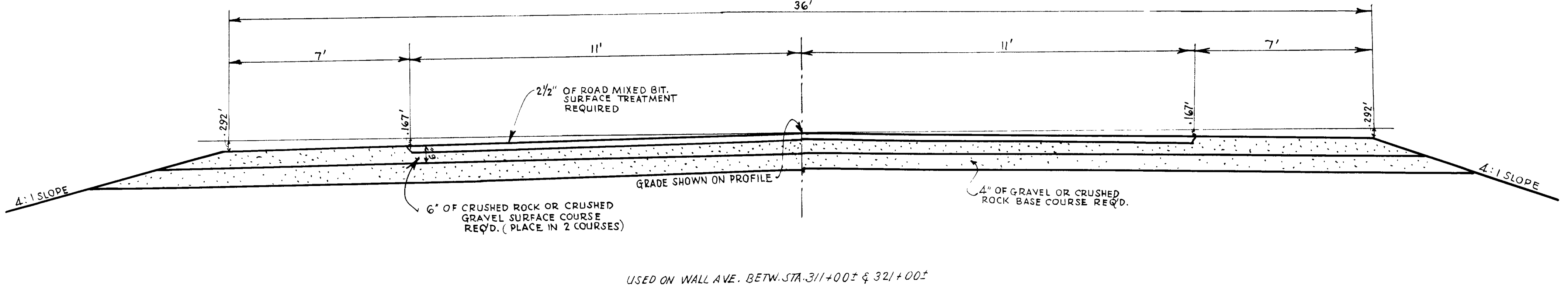
TYPICAL CROSS SECTION

FED. ROAD DIST. NO.	STATE	PROJ. NO.	ROAD YEAR	SHEET NO.	TOTAL SHEETS
12	UTAH	227.46	1942	2	8
				DATE	
				9.1	



NOTE: ROAD MIXED BIT. SURFACE TREATMENT NOT INCLUDED IN THIS CONTRACT

NOTE: INCREASE THICKNESS OF P.C. CONC. SIDEWALK TO 6" AT ALL DRIVEWAYS



REVISIONS	DATE	BY	CHKD.

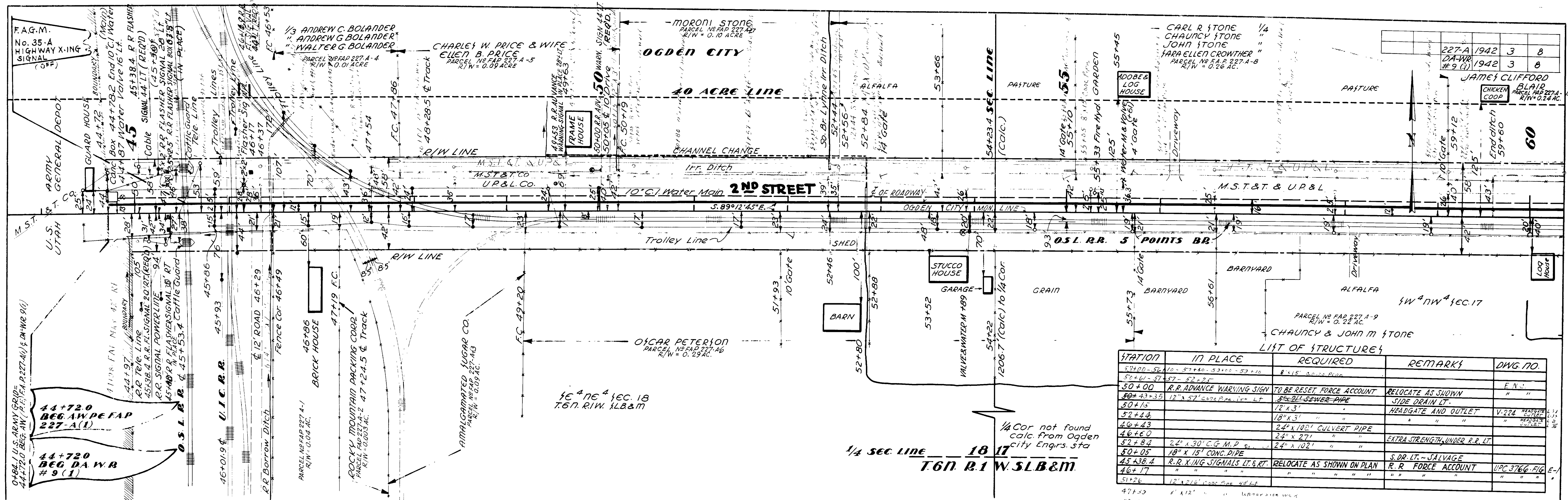
UTAH STATE ROAD COMMISSION
 SALT LAKE CITY, UTAH
 W.L. ANDERSON - DESIGN ENGINEER

— TYPE —

ROAD MIXED BIT.
 SURFACED ROADWAY

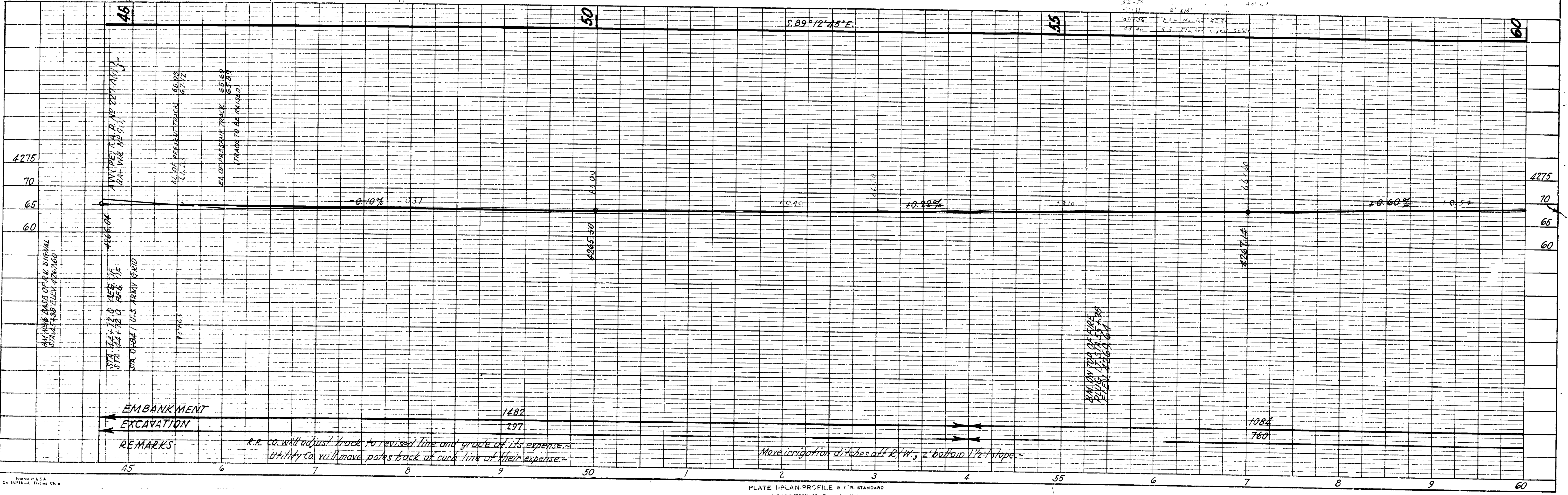
PLAN
 SURVEYED BY C.R.K. IMBALL
 ALIGNED CHANGED BY H.S. WRIGHT
 RECORDED NO. 3934

PROFILE
 SURVEYED BY C.R.K. IMBALL
 ALIGNED CHANGED BY H.S. WRIGHT
 RECORDED NO. 4913



LIST OF STRUCTURES

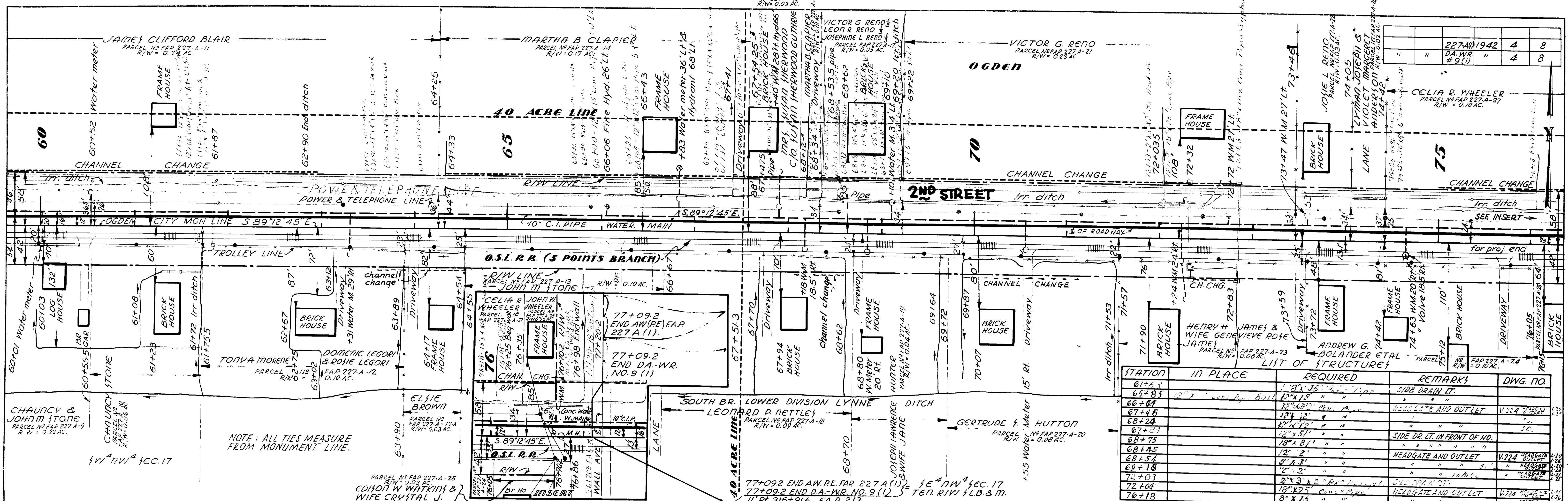
STATION	IN PLACE	REQUIRED	REMARKS	DWG. NO.
53+00-54+10	8" x 15" CONC. PIPE			
54+00	R.R. ADVANCE WARNING SIGN	TO BE RESET, FORCE ACCOUNT	RELOCATE AS SHOWN	F.N.
50+43+35	12" x 57" CONC. PIPE	8" ALL-SEWER PIPE	SIDE DRAIN LT.	
50+15		12" x 3'	HEADGATE AND OUTLET	V-224
52+44		18" x 3'		
46+43		24" x 102' CULVERT PIPE		
46+60		24" x 27'	EXTRA STRENGTH UNDER R.R. LT.	
52+84	24" x 30" C.C. M.P.			
50+05	18" x 15' CONC. PIPE			
45+38.4	R.R. X-ING SIGNALS LT. & RT.	RELOCATE AS SHOWN ON PLAN	S. DR. LT. - SALVAGE	IPC 3766-FIG. E-1
46+17			R.R. FORCE ACCOUNT	
51+26	12" x 16" CONC. PIPE			
47+50	6" x 12"		WATER MAIN	
52-50				
52+33	6" x 15"			
50+38	6" x 15"			
45+50	8" x 15"			



REMARKS
 r.r. co. will adjust track to revised line and grade at its expense.
 Utility Co. will move poles back of curb line at their expense.
 Move irrigation ditches off R/W, 2' bottom 1/2' slope.

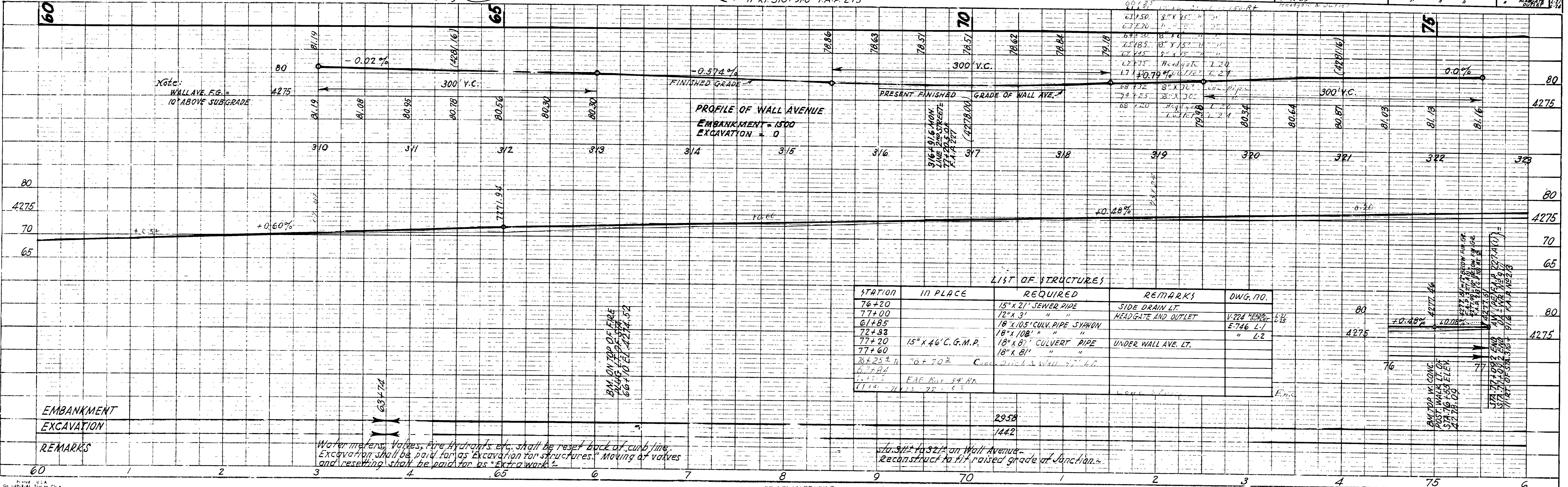
PLAN
 DRAWN BY
 CHECKED BY
 APPROVED BY
 DATE
 PROJECT NO.

PROFILE
 DRAWN BY
 CHECKED BY
 APPROVED BY
 DATE
 PROJECT NO.



NOTE: ALL TIES MEASURE FROM MONUMENT LINE.

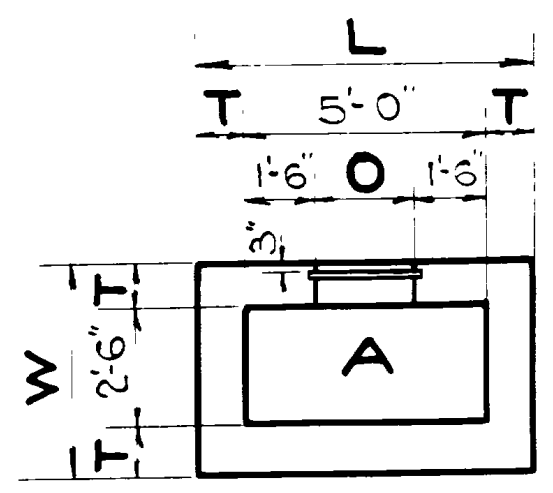
STATION	IN PLACE	REQUIRED	REMARKS	DWG. NO.
61+63		12" x 15" C.I. Pipe	SIDE DRAIN LT.	
65+85		12" x 15" C.I. Pipe	SIDE DRAIN LT.	
66+64		12" x 15" C.I. Pipe	HEADGATE AND OUTLET	V. 224
67+46		12" x 15" C.I. Pipe	"	"
68+24		12" x 15" C.I. Pipe	"	"
67+87		18" x 8 1/2" C.I. Pipe	SIDE DR. LT. IN FRONT OF HO.	"
68+75		12" x 15" C.I. Pipe	"	"
68+45		12" x 15" C.I. Pipe	"	"
68+54		12" x 15" C.I. Pipe	HEADGATE AND OUTLET	V. 224
69+16		12" x 15" C.I. Pipe	"	"
72+03		12" x 15" C.I. Pipe	"	"
72+04		12" x 15" C.I. Pipe	"	"
76+18		12" x 15" C.I. Pipe	HEADGATE AND OUTLET	V. 224



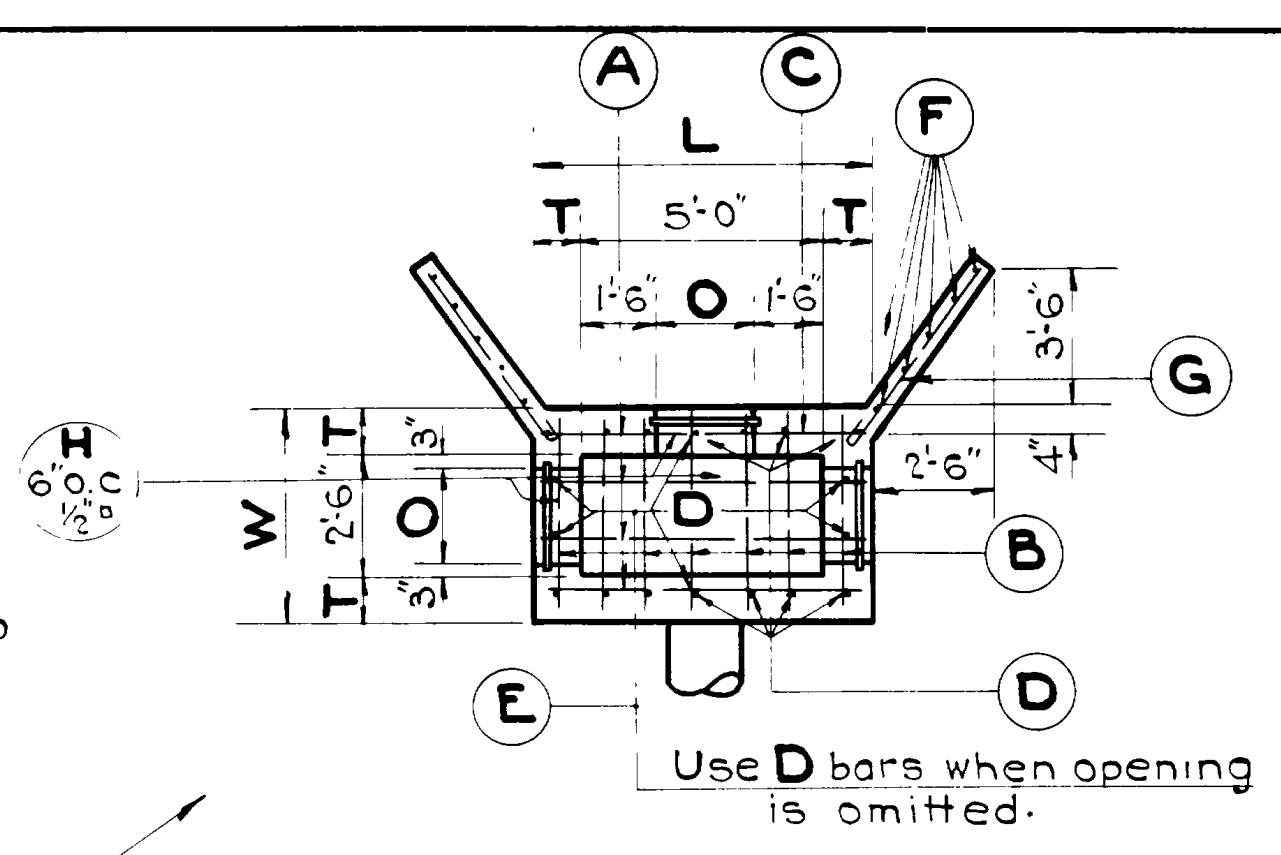
STATION	IN PLACE	REQUIRED	REMARKS	DWG. NO.
76+20		15" x 21" SEWER PIPE	SIDE DRAIN LT.	
77+00		12" x 3' "	HEADGATE AND OUTLET	V. 224
61+85		18" x 10.5' CULV. PIPE SYPHON	"	E. 746
72+83		18" x 10.5' "	"	L. 1
77+20	15" x 46' C.G.M.P.	18" x 8' CULVERT PIPE	UNDER WALL AVE. LT.	"
77+60		18" x 8' "	"	"
76+25	76+70	Conc. 21" x 1.5' Wall 5" H.T.	"	"
67+84			"	"
71+4			"	"

Water meters, valves, fire hydrants, etc. shall be reset back of curb line. Excavation shall be paid for as excavation for structures. Moving of valves and resetting shall be paid for as extra work.

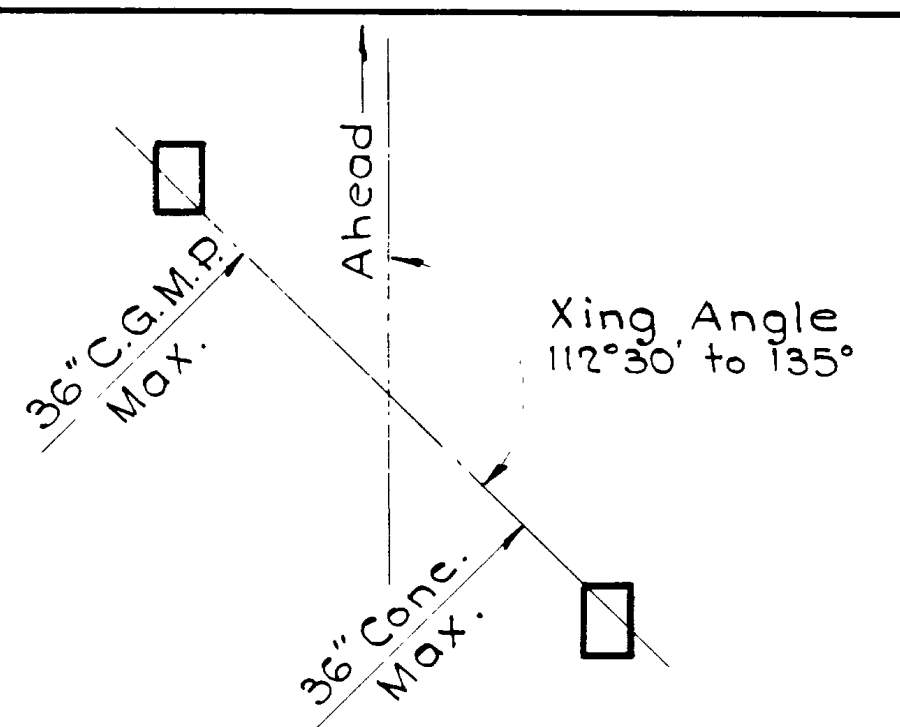
Sta. 312+32.2 on Wall Avenue - reconstruct to fill raised grade at junction.



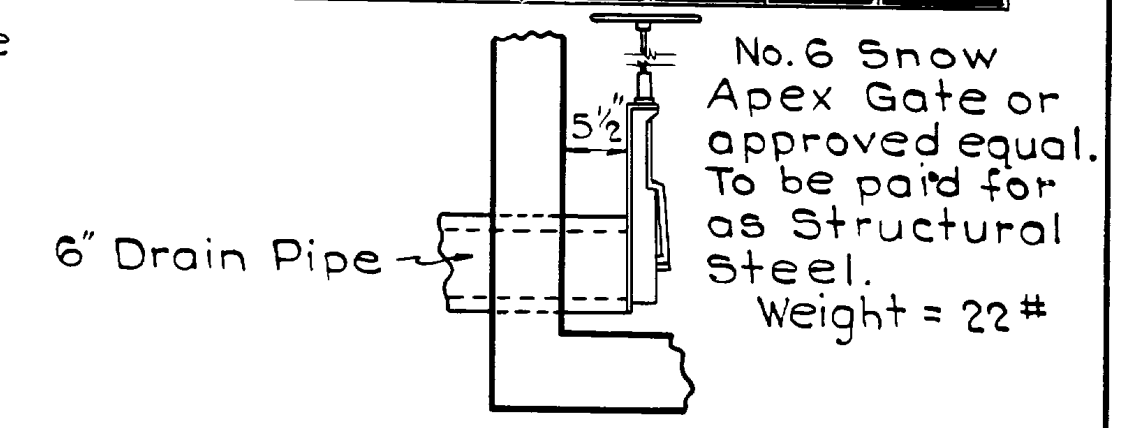
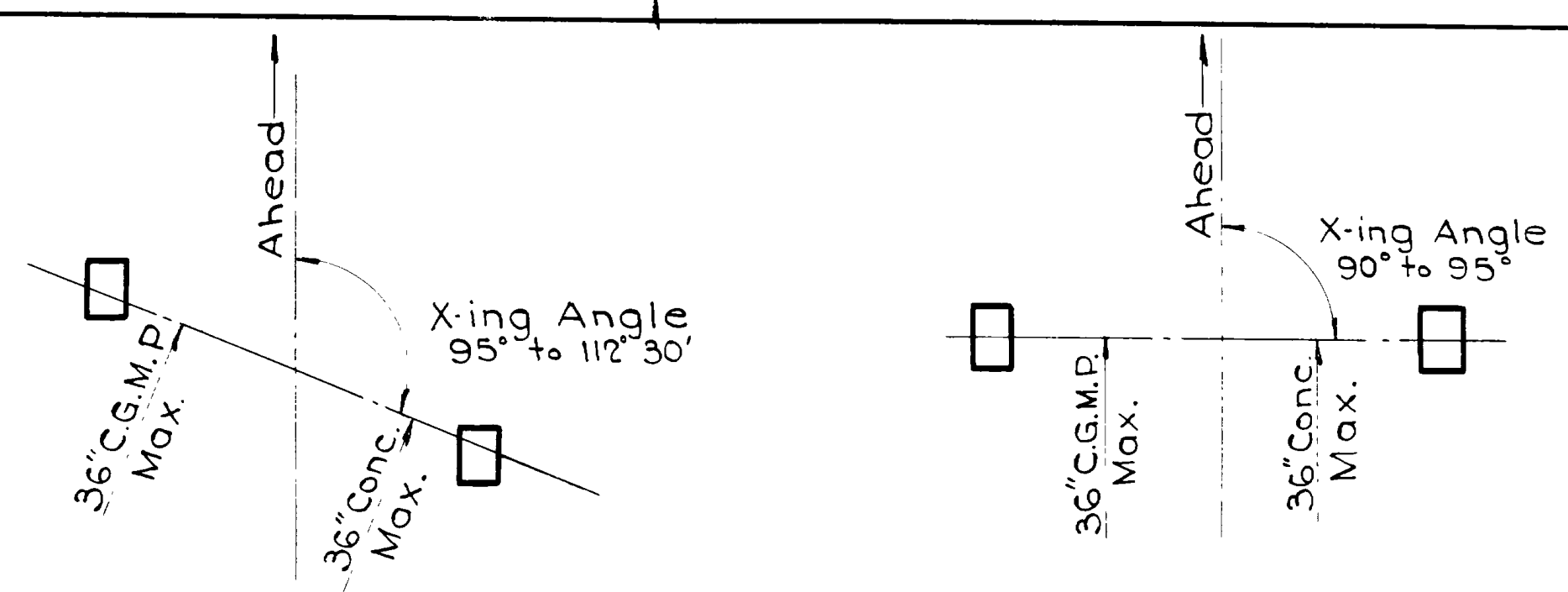
A with Inlet or Outlet Lip in End Wall Only



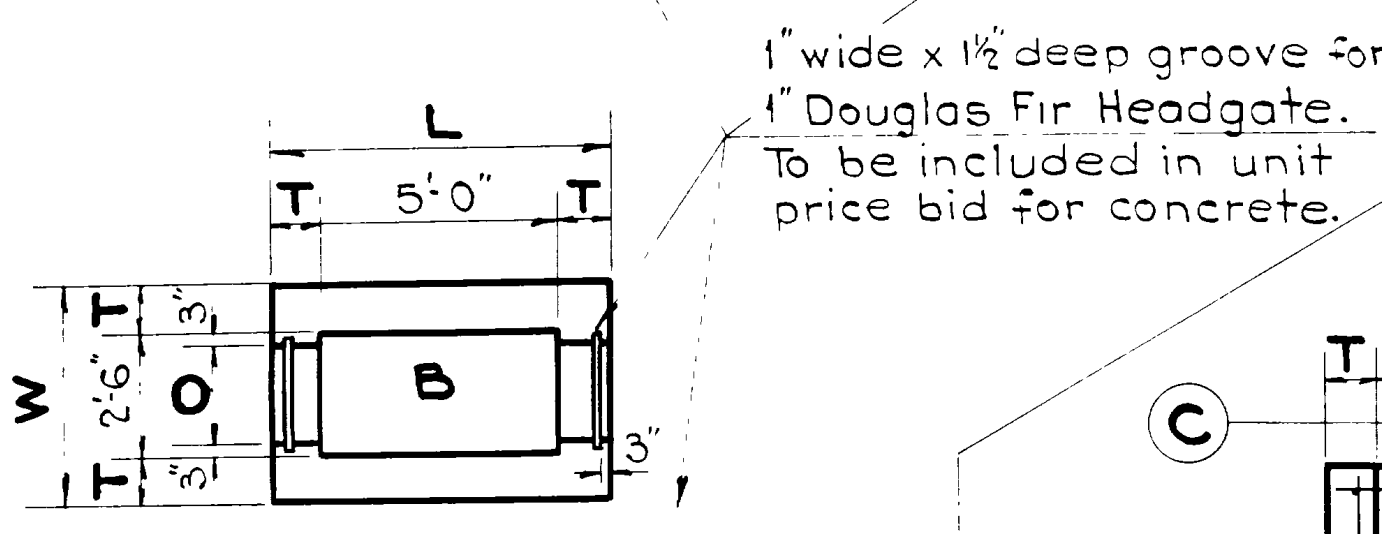
Use D bars when opening is omitted.



TYPICAL POSITIONS OF INLET & OUTLET WELLS

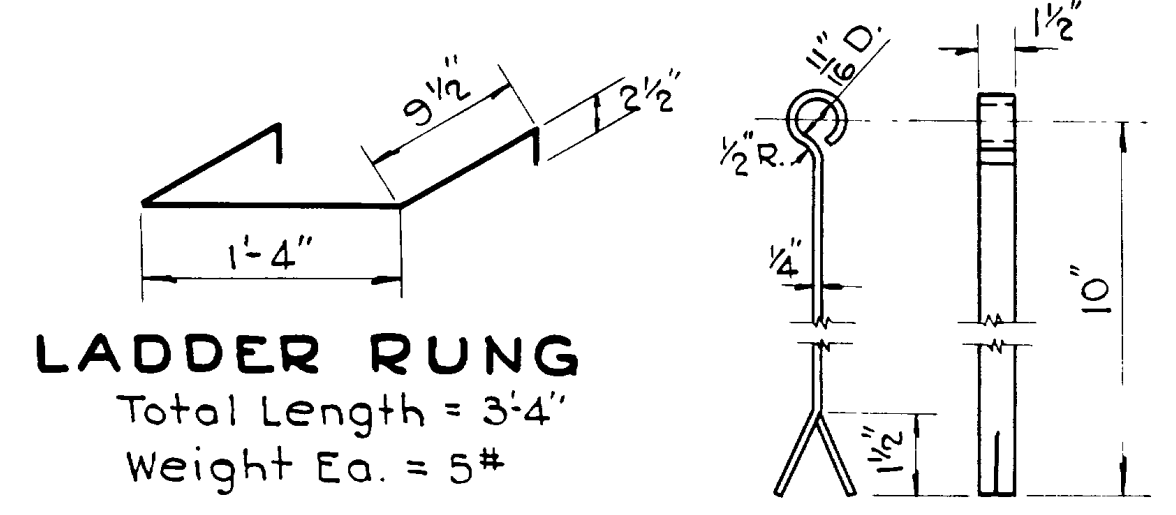


DRAIN GATE

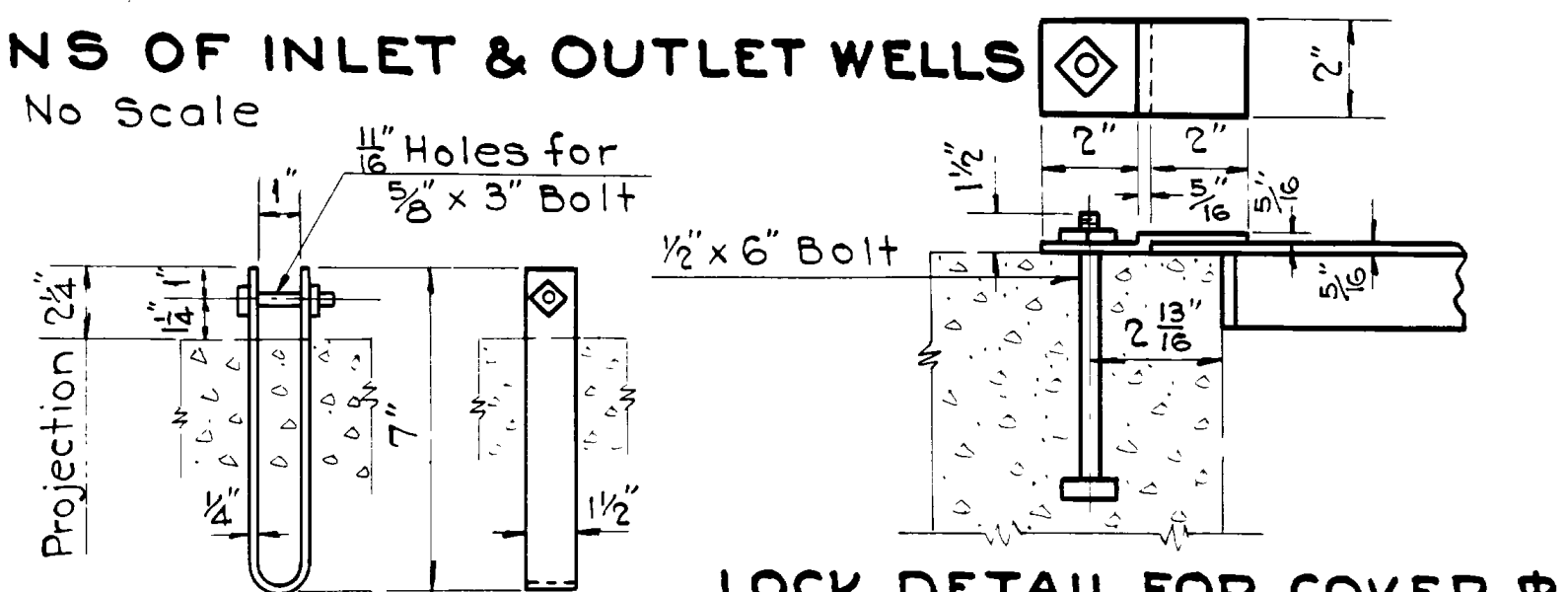


1" wide x 1 1/2" deep groove for 1" Douglas Fir Headgate. To be included in unit price bid for concrete.

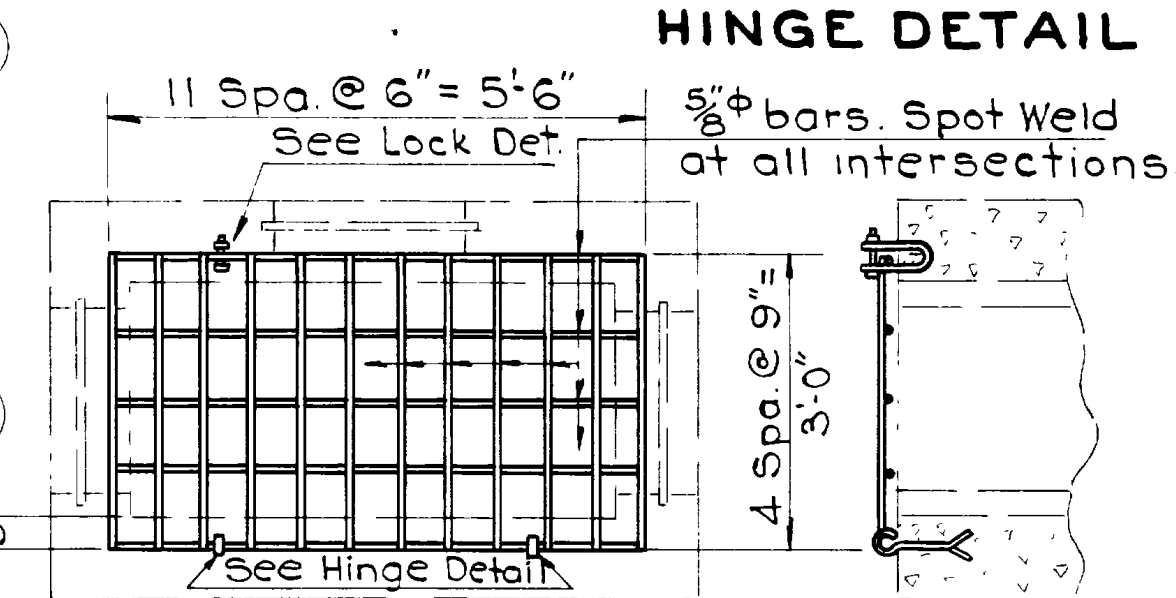
Extend cut off wall to these dimensions when required.



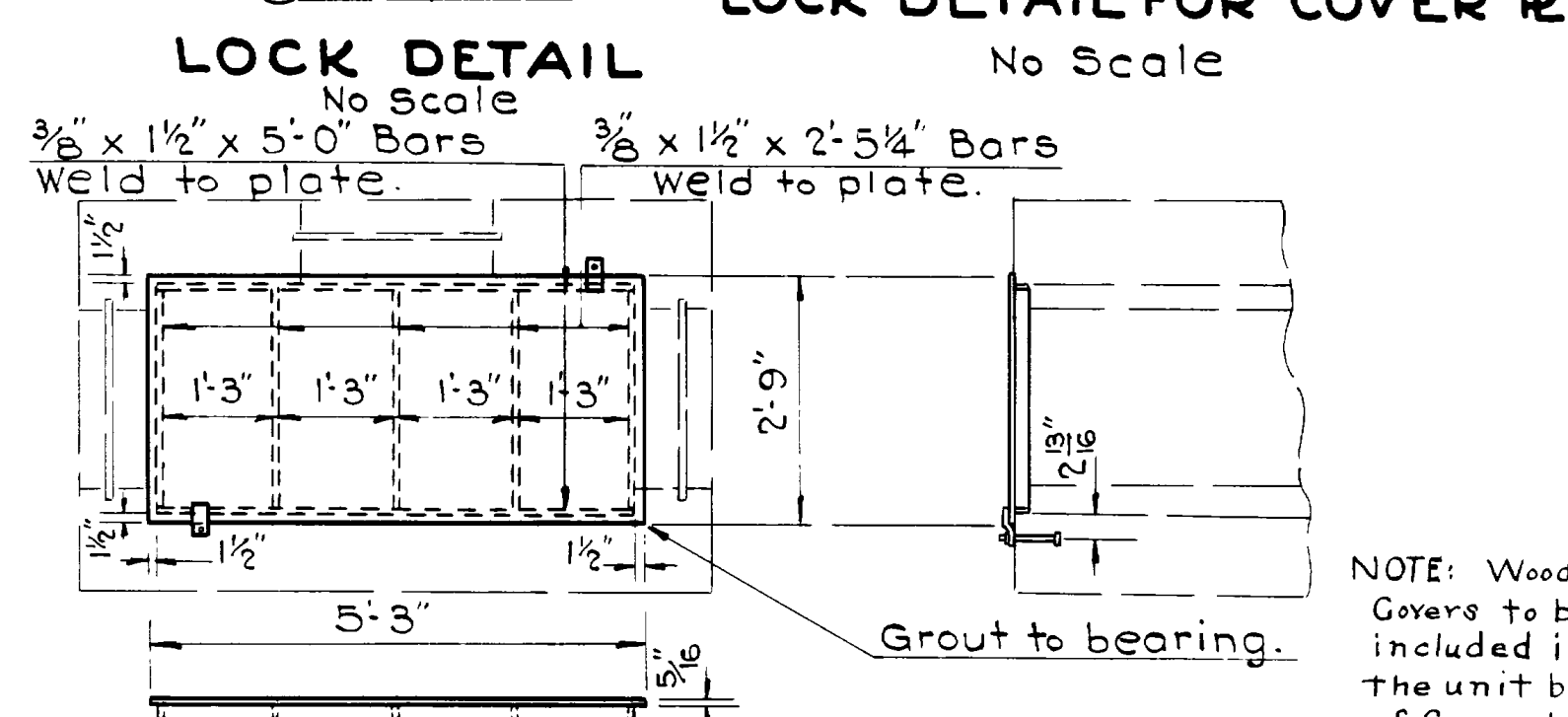
LADDER RUNG
Total Length = 3'-4"
Weight Ea. = 5#



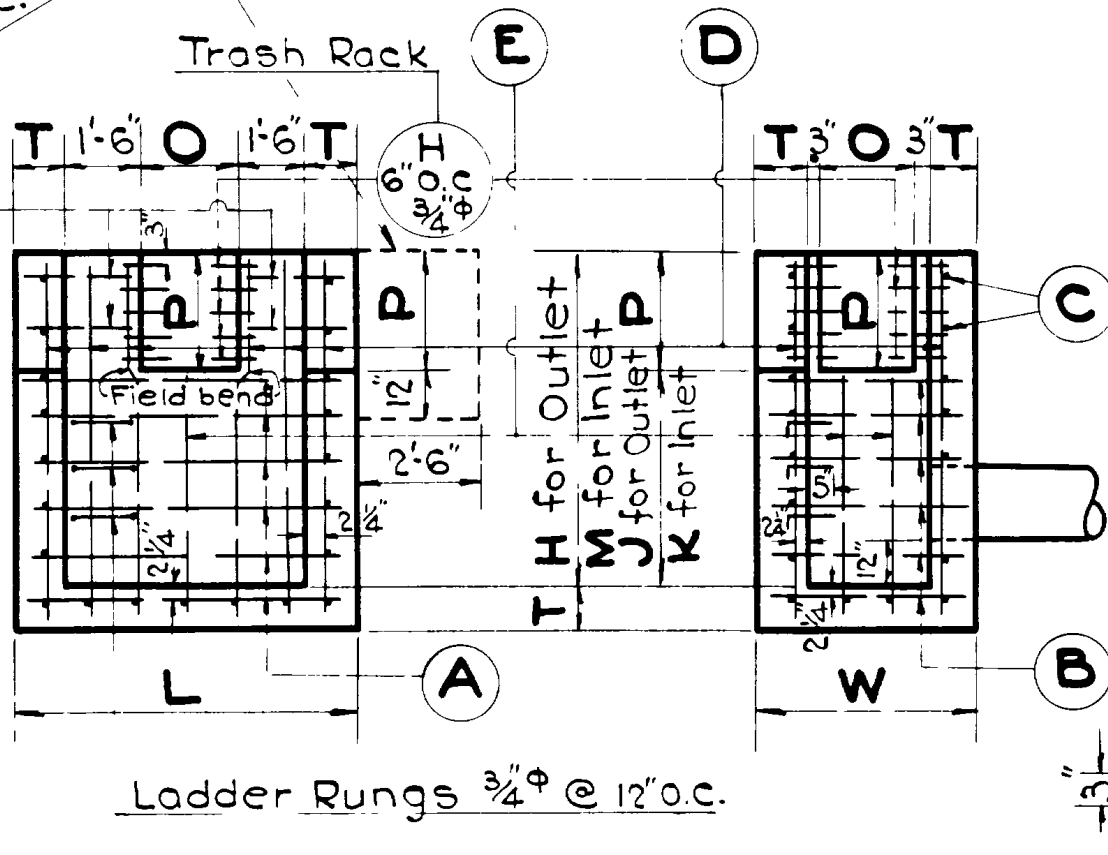
LOCK DETAIL FOR COVER R.



HINGE DETAIL



DETAIL OF INLET & OUTLET COVER R.
Total Weight = 227# complete



TYPICAL SECTIONS

DETAIL CUT OFF WALL

Note: + before distance denotes F.L. above Finish Grade

Spacing of all bars 12" O.C. except as noted.

DETAIL OF INLET & OUTLET GRATING
1/2" = 1'-0"
Note: Grating shall come equipped with lock and hinges. To be paid for as structural steel. Total weight = 71 lbs.

GENERAL NOTES

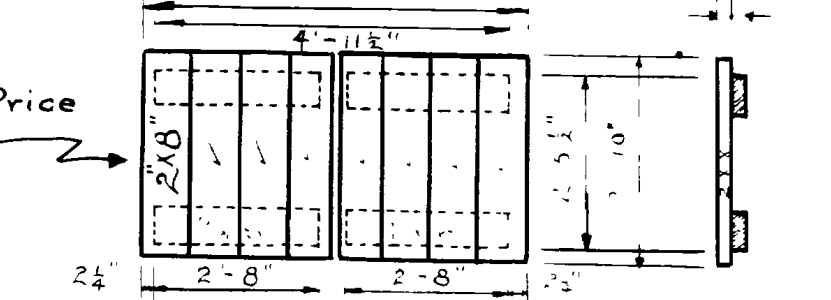
Materials, construction and workmanship shall be in accordance with State Standard Specs. for Road and Bridge construction, edition of 1939.

All exposed edges to be chamfered 1"

All reinforcing steel to be 1/2" φ except "H" bars, which are to be 3/4" φ and used in Inlets and Outlets of wells.

Excavations for structures shall include excavation for pipe and wells.

Grating to receive one shop coat of State Std. Red Lead and Oil paint and two field coats of State Standard Aluminum or Gray Paint.



NOTE: Wooden Covers to be included in the unit bid of Concrete

REVISIONS	DATE	BY

LINE NO.	INLET TYPE	OUTLET TYPE	SIZE PIPE	KIND PIPE	LGTH PIPE	DIRECTION FLOW	XING ANGLE	DISTANCE FROM FG. @ ROAD TO FL. OF PIPE			INLET WELL								OUTLET WELL								CUT OFF WALL QUANTITIES				GRAND TOTALS																																
								INLET LIP	OUTLET LIP		T	W	L	K	M	O	P	T	W	L	J	H	O	P	LGTH	NO.	LGTH	NO.	LGTH	NO.	LGTH	NO.	STEEL	CONC.	BAR F	BAR G	CONC.	NO.	NO.	NO.	NO.	WEIGHTS	EXCAV FOR STRUCT	REINF. STEEL	CONC.	STRUCT. STEEL																	
1	A	B	18"	CGM	105	Rt. to Lt.	90°	-3.87	-0.67	-1.71	8"	3'-0"	6'-4"	3'-0"	5'-0"	2'-0"	2'-0"	8"	3'-0"	6'-4"	3'-0"	5'-0"	2'-0"	2'-0"	6'-1"	12	3'-7"	1	1'-11"	1	5'-5"	17	3'-5"	2	3'-0"	5	180.8	2.05	6	14	3'-7"	13	-	-	5'-5"	14	3'-5"	4	3'-0"	10	177.9	2.55	-	-	-	-	4	-	2	Timber	39	358.6	5.20
2	A	B	18"	CGM	108	Rt. to Lt.	90°	-3.1	-0.1	-0.3	8"	3'-0"	6'-4"	3'-11"	4'-9"	2'-0"	0'-10"	8"	3'-10"	6'-4"	3'-11"	4'-9"	2'-0"	0'-10"	6'-1"	12	3'-7"	16	1'-6"	4	4'-9"	17	3'-11"	2	3'-0"	1	186.6	2.31	6	14	3'-7"	15	-	-	4'-9"	14	3'-11"	4	3'-0"	2	192.2	2.29	-	-	-	-	6	-	2	Timber	44	378.8	4.60
3	B	B	18"	CGM	105	Rt. to Lt.	90°	-3.5	-2.21	-2.51	8"	3'-10"	6'-4"	2'-2"	3'-0"	2'-0"	1'-6"	8"	3'-10"	6'-4"	2'-2"	3'-8"	2'-0"	1'-6"	6'-1"	12	3'-7"	11	-	4'-1"	13	2'-7"	5	3'-0"	6	146.2	2.00	6	14	3'-7"	11	-	-	4'-1"	13	2'-7"	5	3'-0"	6	146.2	2.00	-	-	-	-	6	-	2	71	39	292.4	4.00	142

UTAH STATE ROAD COMMISSION
SALT LAKE CITY, UTAH

STANDARD
SYPHON EXTENSIONS & RENEWALS
WITH DIVERSION FEATURES

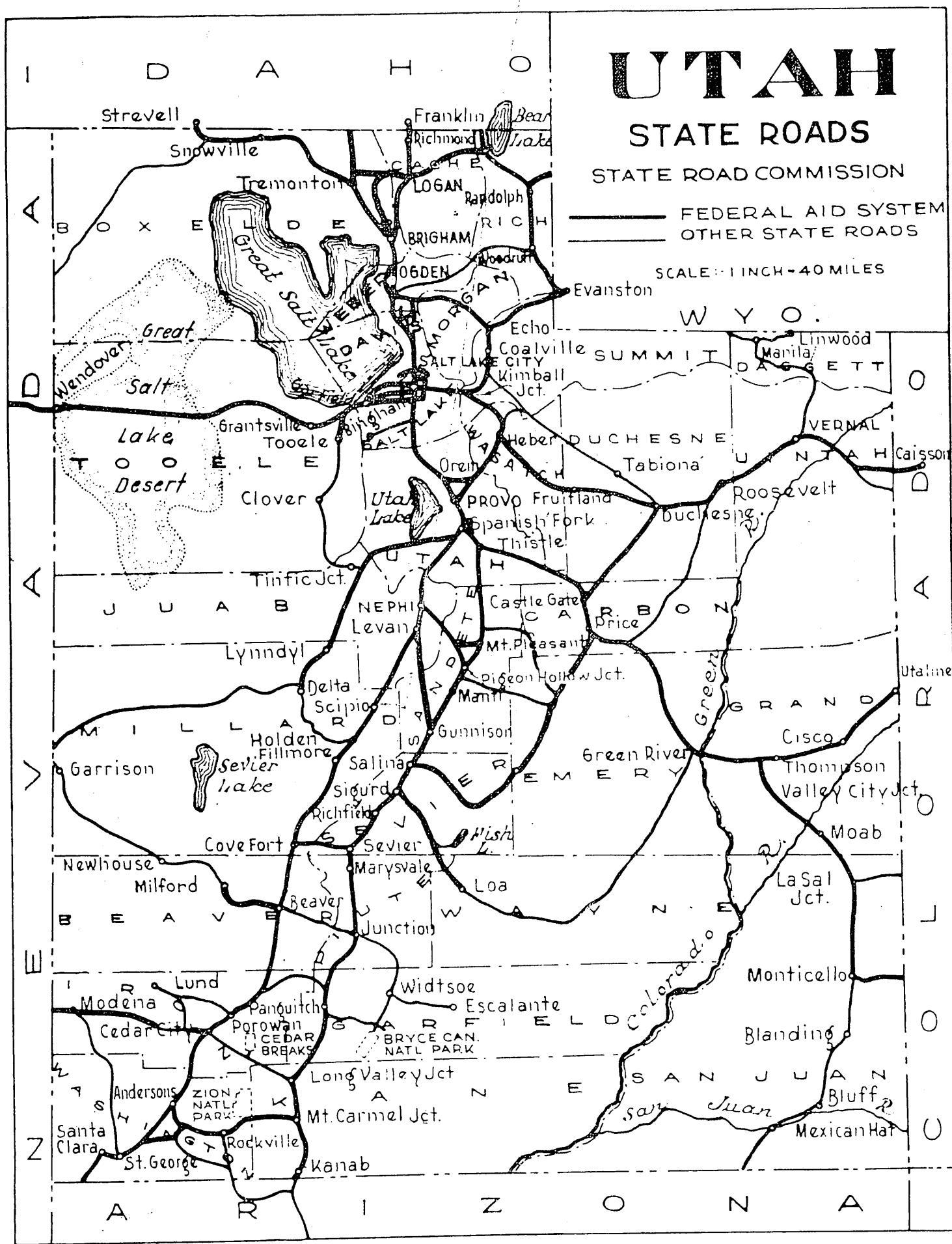
STA. _____ P. _____
COUNTY _____

DESIGNED BY _____ SCALE _____
DRAWN BY W.H.T. ISSUED _____
CHECKED BY _____ APPROVED _____
EXAMINED BY _____

DR. No. _____ Dwg. No. **E-746**

STATE OF UTAH STATE ROAD COMMISSION

FED. ROAD DIST. NO.	STATE	FED. AID PROJ. NO.	FISCAL YEAR	SHEET NO.	TOTAL SHEETS
12	UTAH	227-A(1)	1942	1	8
"	"	DA-WR 9(1)	1942	1	8
"	"	228-A(1)	1942	1	7
"	"	DA-WR 8(1)	1942	1	15
"	"	DA-WR 7(1)	1942	1	9



PLANS OF PROPOSED STATE ROAD

FEDERAL AID PROJECT

- AW(PE) F.A.P. No 227-A(1) ~ LENGTH 0.613 MILES
- DA-WR No 9(1) ~ LENGTH 0.613 MILES
- AW(PE) F.A.P. No 228-A(1) ~ LENGTH 2.449 MILES
- DA-WR No 7(1) ~ LENGTH 0.897 MILES
- DA-WR No 8(1) ~ LENGTH 1.810 MILES

INDEX TO SHEETS DA-WR No 7(1)

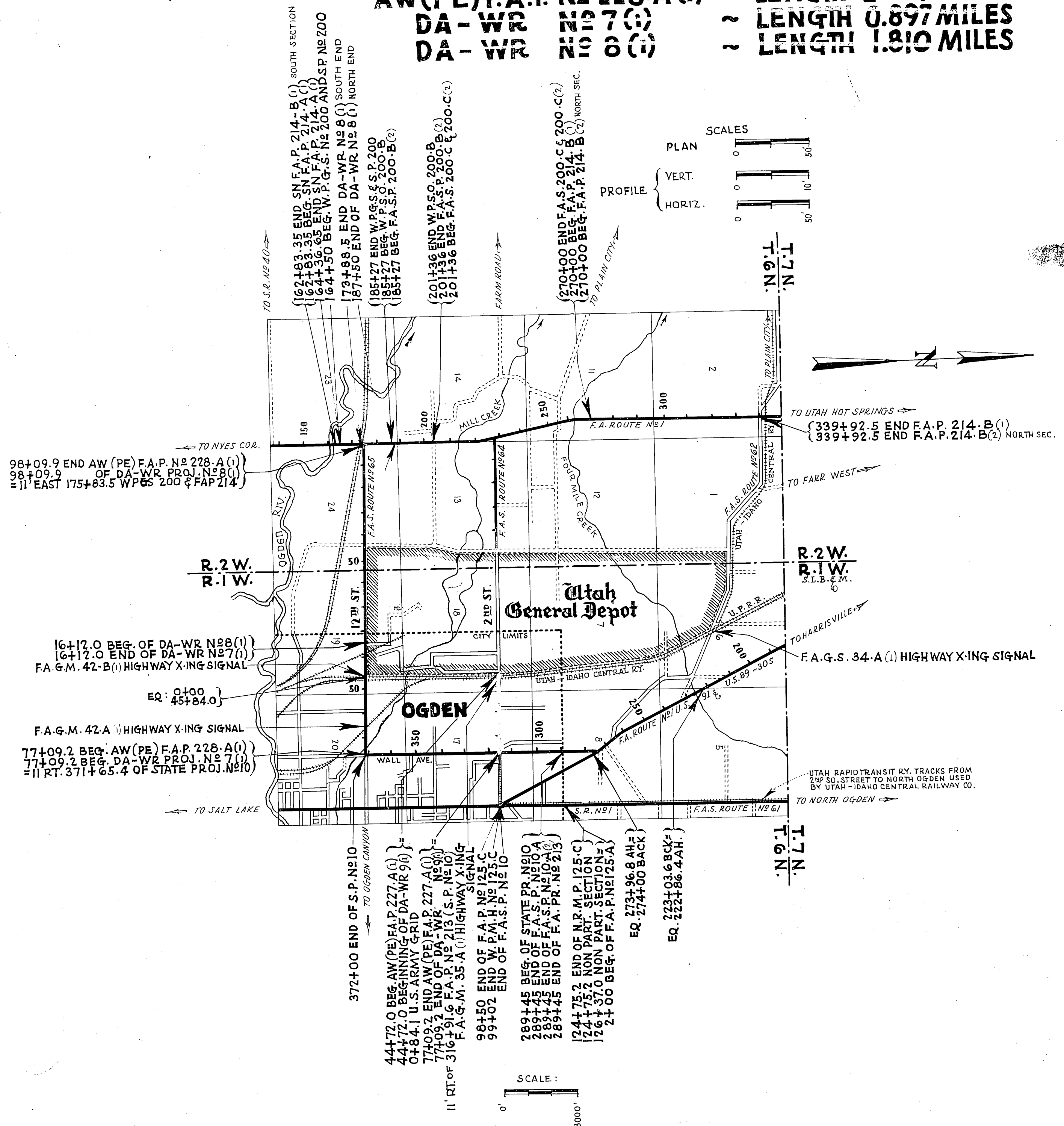
SHEET	DESCRIPTION	DRAWING NO.	STATION
1	TITLE SHEET		
2	TYPICAL SECTION		
3-4	PLAN AND PROFILE		
5-7	E.T. TO 17'-7" 6" O CONG. RIG. FR. BRIDGE	E-516 V. 82 B1	55+21
8	HEAD GATES AND OUTLETS	V-224 L1	VARIOUS
9	F.A.P. MARKERS	M-25	
9-A	DETAIL OF POSITION OF ROADWAY		10+56±
1-10	X-SECTIONS		

INDEX TO SHEETS DA-WR No 9(1)

SHEET NO.	DESCRIPTION	DRAWING NO.	STATION
1	TITLE SHEET		
2	TYPICAL SECTION		
3-4	PLAN AND PROFILE		
5	STD. HEAD GATES AND OUTLETS	V-224	VARIOUS
6	24" x 105' CULV. PIPE SYPHON	E-746-L1	61+85
6	24" x 108' " " "	" L2	72+32
7-A	F.A.P. MARKERS	M-45	
B	FLASH LT. SIGNAL & ADVANCE WARNING SIGN	UPC 3766	35+38.4 41+66.5 50+00
1-9	X-SECTIONS		

INDEX TO SHEETS DA-WR No 8(1)

SHEET	DESCRIPTION	DRAWING NO.	STATION
1	TITLE SHEET		
2, 2A	TYPICAL SECTION		
3-6	PLAN AND PROFILE		
7-8	4' x 2' x 80' CONG. BOX CULV. & DIVERSION	E-334-L1	55±
9-10	EXTENSION TO EXISTING CULVERT	E-748	81+47.6
11	2-WAY DIVERSION RT. TYPE A-36	V-205	94+92
12-13	EXTENSION TO EXISTING CULVERT	E-752	23+84.1
14	HEAD GATES AND OUTLETS	V-224	VARIOUS
15-A	F.A.P. MARKERS	M-45	
1-38	X-SECTIONS		



APPROVED JANUARY 1942
STATE ROAD COMMISSION OF UTAH

M. Anderson
DESIGN ENGINEER

RECOMMENDED FOR APPROVAL
DISTRICT ENGINEER
PUBLIC ROADS ADMINISTRATION
FEDERAL WORKS AGENCY

RECOMMENDED FOR APPROVAL
[Signature]
POST COMMISSIONER

RECOMMENDED FOR APPROVAL
CHIEF, WESTERN REGION
PUBLIC ROADS ADMINISTRATION
FEDERAL WORKS AGENCY

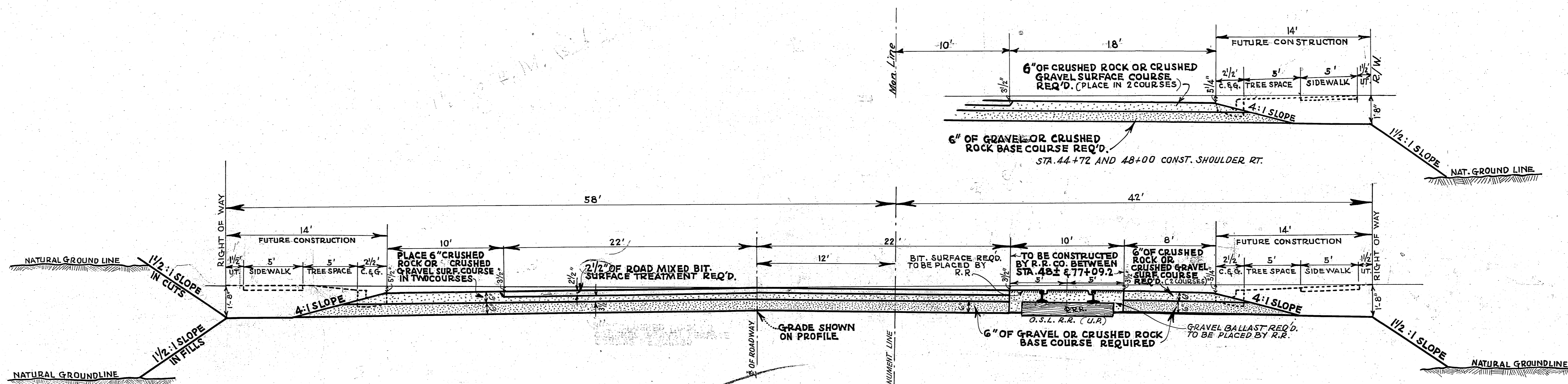
APPROVED
COMMANING GENERAL

APPROVED
COMMISSIONER
PUBLIC ROADS ADMINISTRATION
FEDERAL WORKS AGENCY

-90 F.A.P. 227

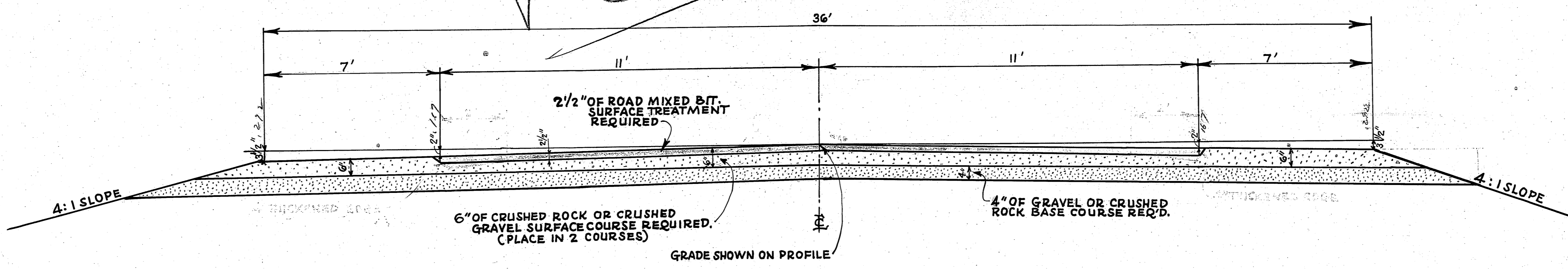
TYPICAL CROSS SECTION

FED. ROAD DIST. NO.	STATE	P.A. PROJ. NO.	FISCAL YEAR	SHEET NO.	TOTAL SHEETS
12	UTAH	277-A(1) DA-WR-9(1)	1942	2	8



USED BETW. STA. 44+72.0 AND STA. 77+09.2

VOID



USED ON WALL AVE. BETW. STA. 311+00 AND 321+00

VOID

REVISIONS	DATE	BY

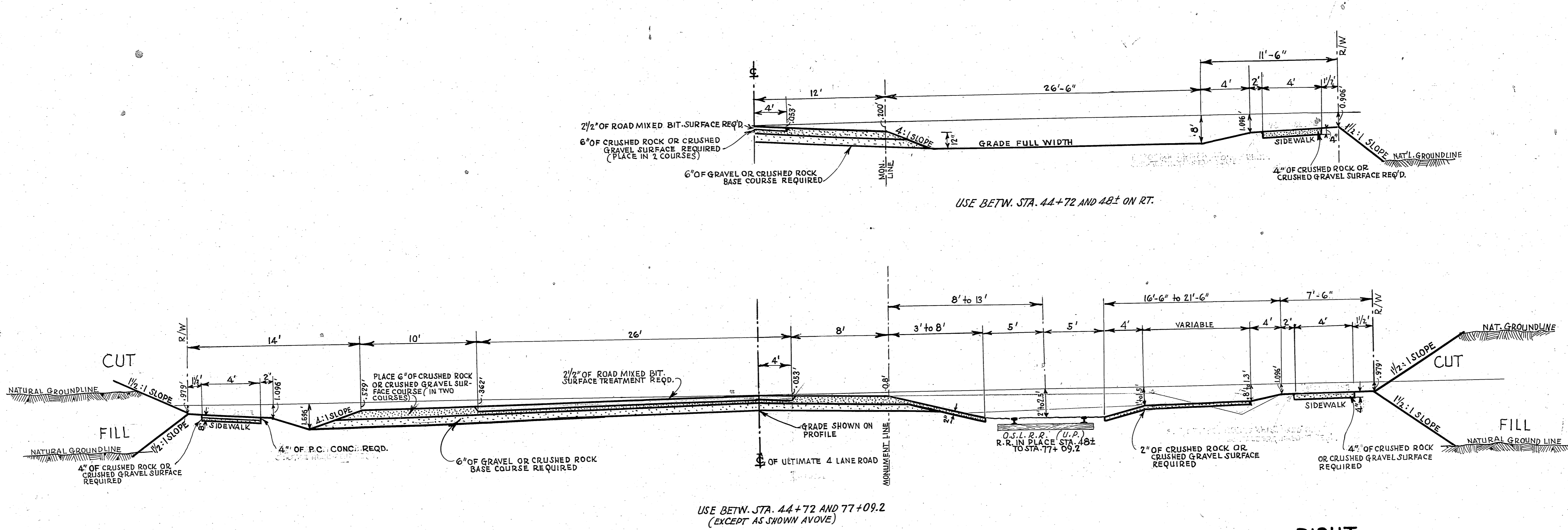
UTAH STATE ROAD COMMISSION
SALT LAKE CITY - UTAH
W. L. ANDERSON - DESIGN ENGINEER

- TYPE -

ROAD MIXED
BIT SURFACED
ROADWAY

TYPICAL CROSS SECTION

FED. ROAD DIST. NO.	STATE	P.A. PROJ. NO.	FISCAL YEAR	SHEET NO.	TOTAL SHEETS
12	UTAH	227-A(1)	1942	2	8
"	"	SA. WE 9.1	"	2	8

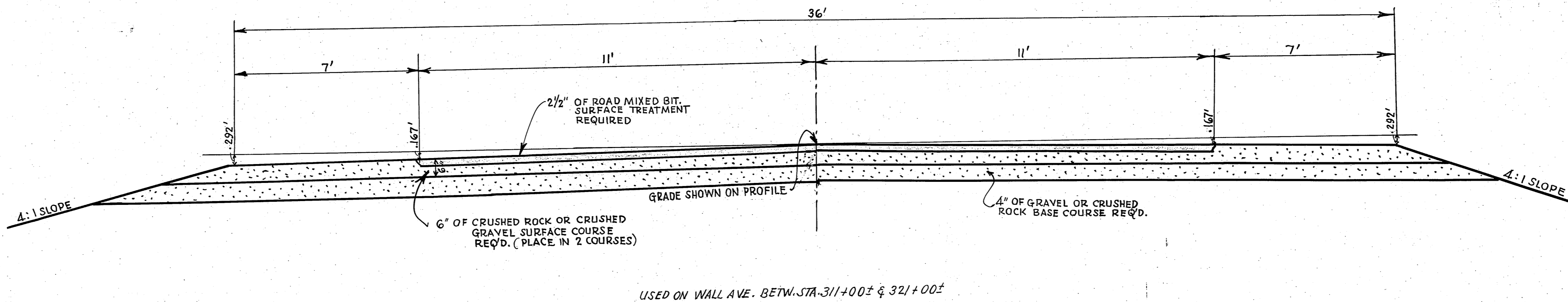


LEFT

RIGHT

NOTE: ROAD MIXED BIT SURFACE TREATMENT NOT INCLUDED IN THIS CONTRACT

NOTE: INCREASE THICKNESS OF P.C. CONC. SIDEWALK TO 6" AT ALL DRIVEWAYS



NO.	REVISIONS	DATE	BY	APP.

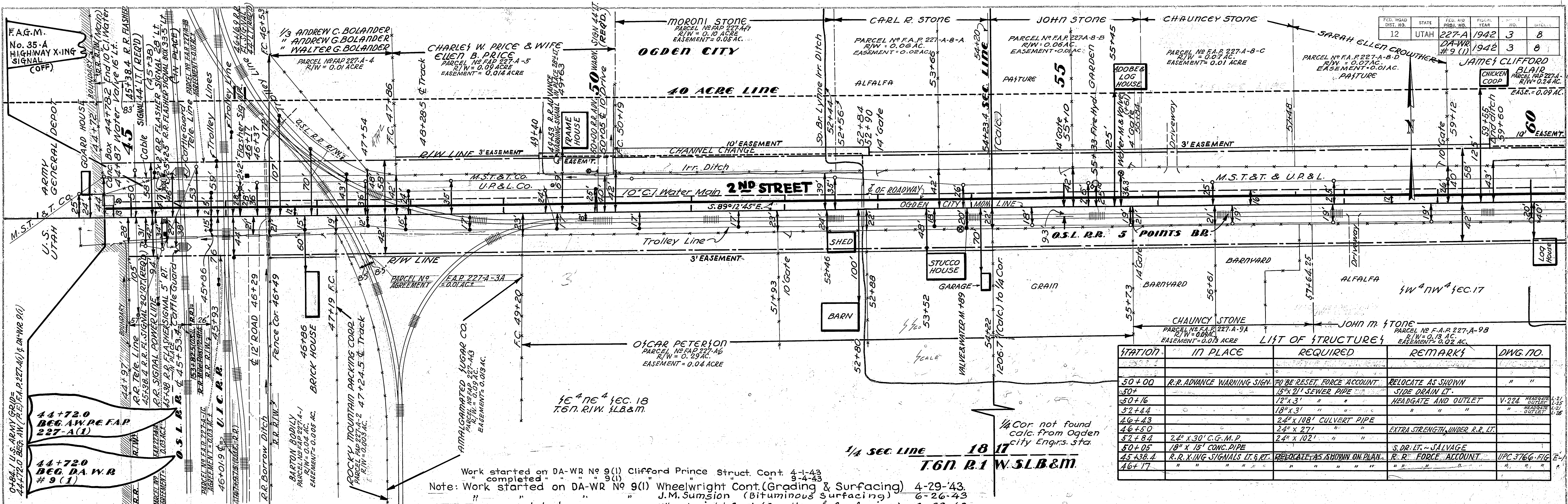
UTAH STATE ROAD COMMISSION
SALT LAKE CITY - UTAH
W. L. ANDERSON - DESIGN ENGINEER

— TYPE —

ROAD MIXED BIT SURFACED ROADWAY

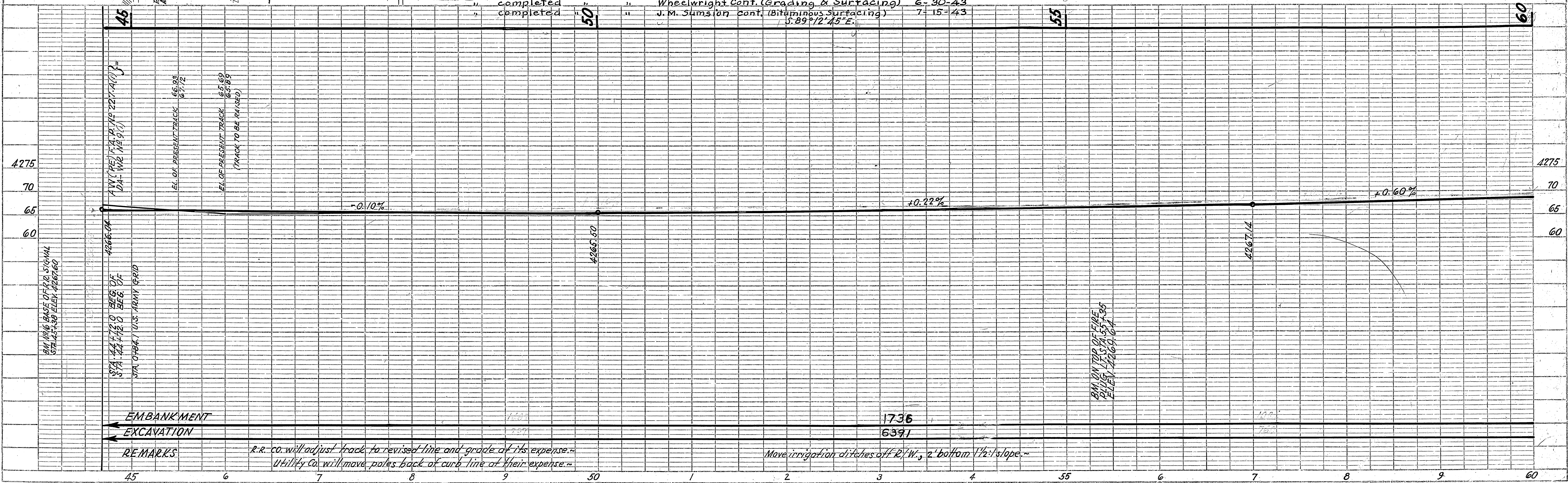
DATE: 1942
 BY: C.R. KIMBALL
 SURVEYED: []
 PLOTTED: []
 CHECKED: []
 E.A.S. NOTED: []
 NO. 4013
 STRUCTURE NOTATION: CH

DATE: 1942
 BY: C.R. KIMBALL
 SURVEYED: []
 PLOTTED: []
 CHECKED: []
 E.A.S. NOTED: []
 NO. 4013
 STRUCTURE NOTATION: CH



STATION	IN PLACE	REQUIRED	REMARKS	DWG. NO.
50+00	R.R. ADVANCE WARNING SIGN	TO BE RESET, FORCE ACCOUNT	RELOCATE AS SHOWN	" "
50+16	"	15" x 21" SEWER PIPE	SIDE DRAIN LT.	" "
50+44	"	18" x 3' "	HEADGATE AND OUTLET	V-224
46+43	"	24" x 108' CULVERT PIPE	"	" "
46+50	"	24" x 27' "	EXTRA STRENGTH UNDER R.R. LT.	" "
52+84	24" x 30' C.G.M.P.	24" x 102' "	"	" "
50+05	18" x 15' CONC. PIPE	"	S. DR. LT. - SALVAGE	" "
45+38.4	R.R. XING SIGNALS LT. & RT.	RELOCATE AS SHOWN ON PLAN.	R.R. FORCE ACCOUNT	U/P 3766-FIG
46+17	"	"	"	"

Work started on DA-WR No 9(1) Clifford Prince Struct. Cont. 4-1-43
 completed 9-4-43
 Note: Work started on DA-WR No 9(1) Wheelwright Cont. (Grading & Surfacing) 4-29-43
 completed J.M. Sumsion (Bituminous Surfacing) 6-26-43
 completed " Wheelwright Cont. (Grading & Surfacing) 6-30-43
 completed " J.M. Sumsion cont. (Bituminous Surfacing) 7-15-43

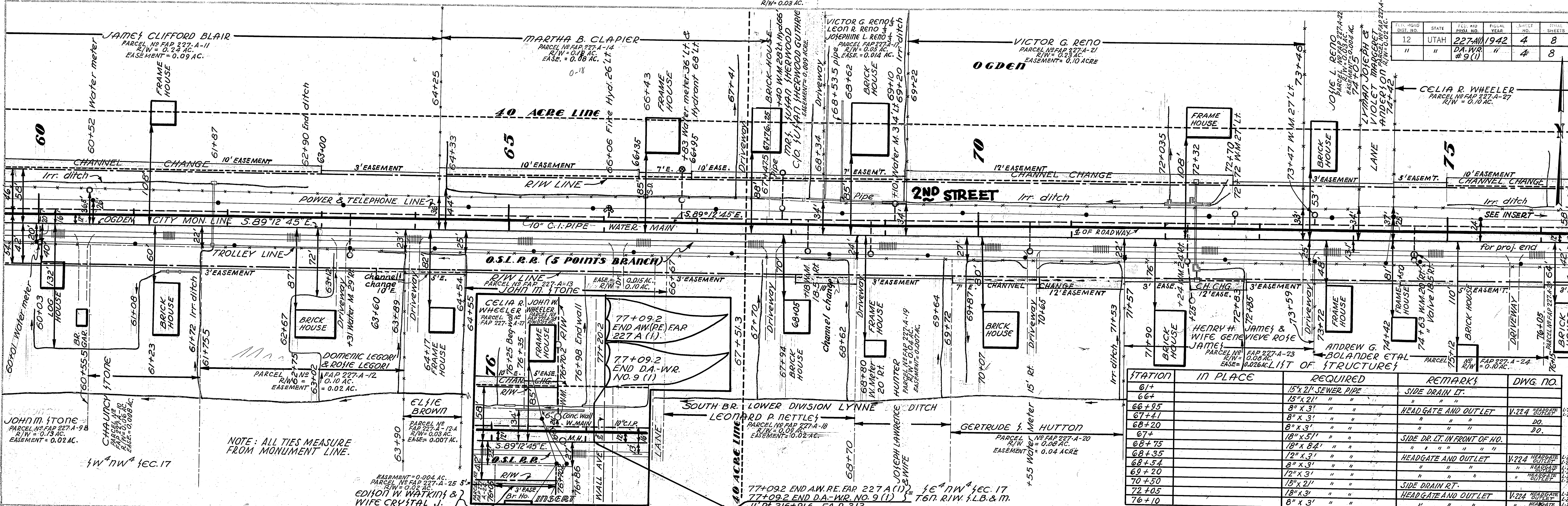


REMARKS
 r.r. co. will adjust track to revised line and grade at its expense.
 Utility Co. will move poles back of curb line at their expense.
 Move irrigation ditches off R/W, 2' bottom 1/2' slope.

DATE: 11/12/1941
 DRAWN BY: BURNS & KIMBALL
 CHECKED BY: H.S. WRIGHT
 TRACED BY: H.S. WRIGHT

PROFILE
 DRAWING NO. 4413
 CHECKED BY: H.S. WRIGHT
 TRACED BY: H.S. WRIGHT

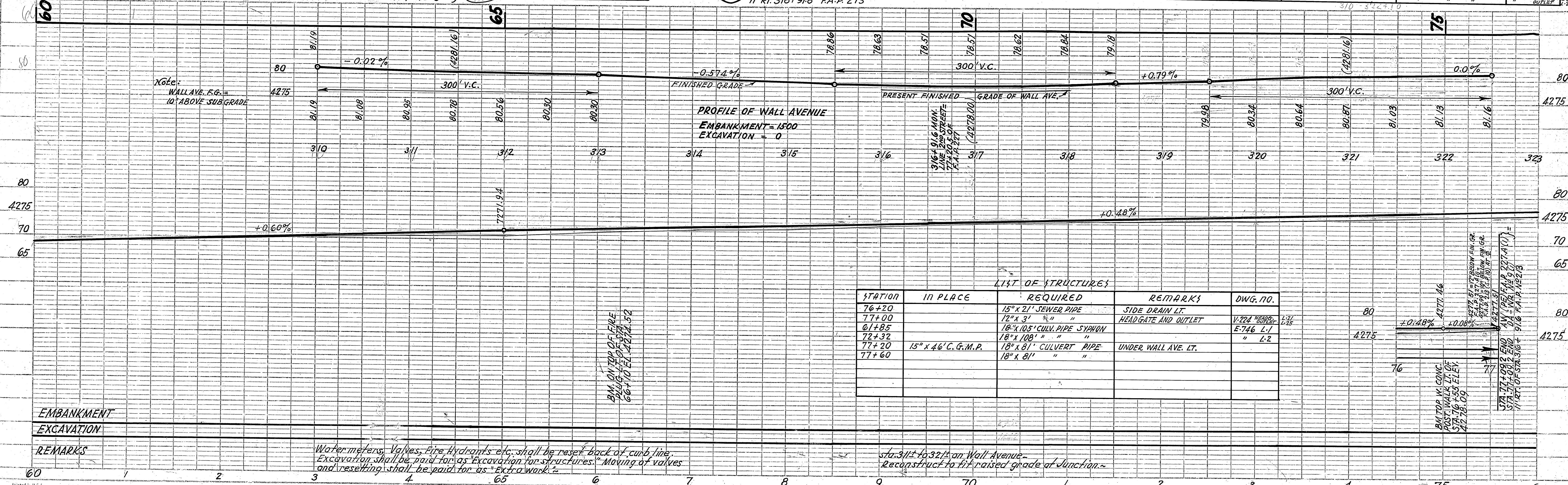
PLAT NO.	STATE	FED. AND STATE NO.	FISCAL YEAR	SHEET NO.	TOTAL SHEETS
12	UTAH	227-A-11	1942	4	8
"	"	227-A-12	"	4	8



STATION	IN PLACE	REQUIRED	REMARKS	DWG. NO.
61+		15" x 21" SEWER PIPE	SIDE DRAIN LT.	
66+		8" x 3' "	HEAD GATE AND OUTLET	V.224
67+41		8" x 3' "	"	20.
68+20		8" x 3' "	"	20.
67+		18" x 5'1" "	SIDE DR. LT. IN FRONT OF HD.	
68+75		18" x 8'4" "	"	
68+35		12" x 3'1" "	HEADGATE AND OUTLET	V.224
68+54		8" x 3' "	"	
69+20		12" x 3'1" "	"	
70+50		15" x 21" "	SIDE DRAIN RT.	
72+05		18" x 3' "	HEAD GATE AND OUTLET	V.224
76+10		8" x 3' "	"	

NOTE: ALL TIES MEASURE FROM MONUMENT LINE.

Note: WALL AVE. F.G. = 10' ABOVE SUBGRADE

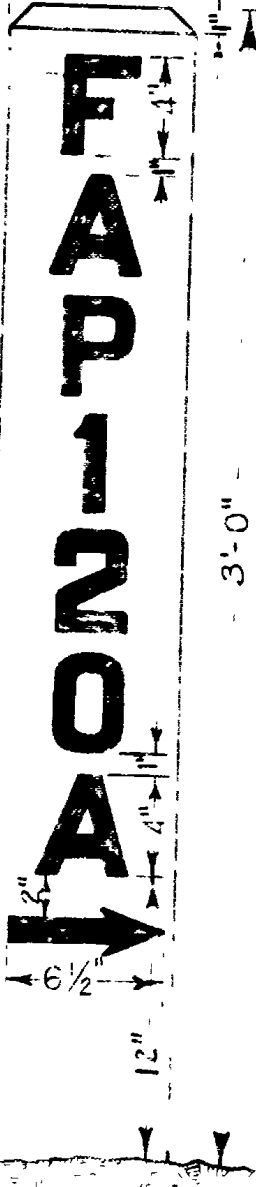


STATION	IN PLACE	REQUIRED	REMARKS	DWG. NO.
76+20		15" x 21" SEWER PIPE	SIDE DRAIN LT.	
77+00		12" x 3' "	HEADGATE AND OUTLET	V.224
61+85		18" x 105" CULV. PIPE SYPHON	"	E-746 L.1
72+32		18" x 108' "	"	" L.2
77+20	15" x 46" C.G.M.P.	18" x 81' CULVERT PIPE	UNDER WALL AVE. LT.	
77+60		18" x 81' "	"	

Water meters, Valves, Fire Hydrants, etc. shall be reset back of curb line. Excavation shall be paid for as "Excavation for structures." Moving of valves and resetting shall be paid for as "Extra work."

Sta. 3112 to 3213 on Wall Avenue - Reconstruct to the raised grade at Junction.

Note: Do not letter suffixes as (SN)-12 etc. on project marker.



DETAIL OF LETTERING

POSTS, - 3"x8"x5" S.P.S. SHALL BE DOUGLAS FIR OR OTHER APPROVED WOOD OF SOUND QUALITY, AND SHALL BE GIVEN SECTIONS OF FIRST QUALITY LEAD-ZINC WHITE PAINT.

LETTERS AND DIGITS, - U.S.B.R. JOINT BOARD STANDARD, 4" SERIES "D" PAINTED BLACK IN ACCORDANCE WITH A.A.S.H.O. SPECIFICATIONS.

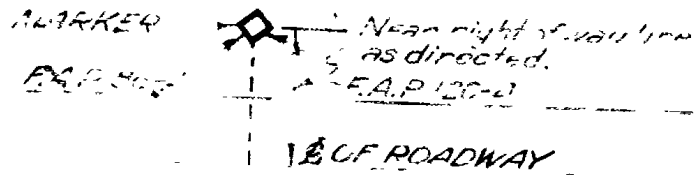
MARKERS ARE TO BE PLACED ACCURATELY AT BEGINNING AND END OF PROJECT, UNLESS OTHERWISE DIRECTED.

POSTS ARE TO BE PLACED IN ACCORDANCE WITH SPECIFICATIONS

WHERE PROJECT JOINS A COMPLETED FEDERAL AID PROJECT, THE CONTRACTOR SHALL PAINT ON THE ADJACENT FACE OF THE POST, THE NUMBER REFERRING TO THAT PROJECT.

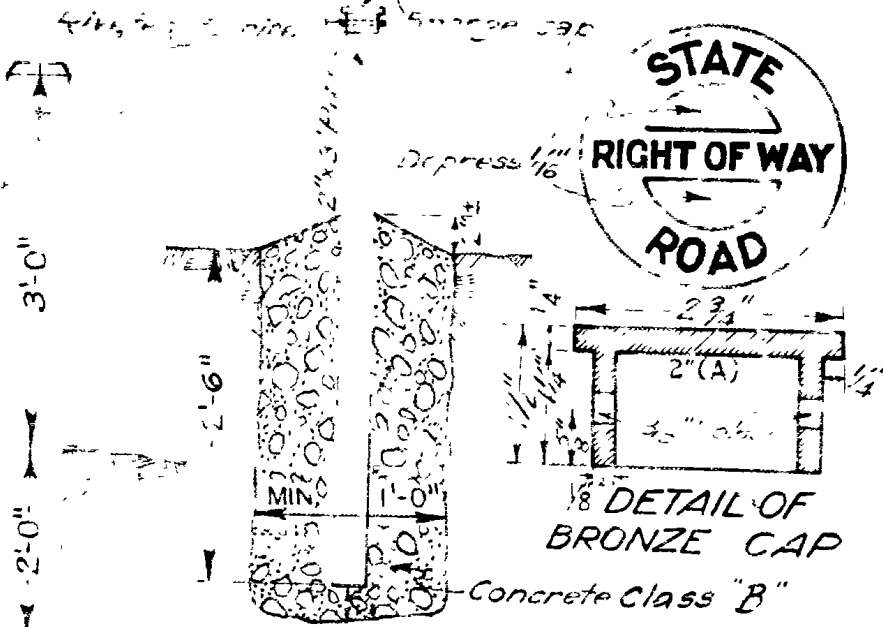
IF A SATISFACTORY MARKER IS NOW IN PLACE FOR THE ADJOINING PROJECT, NO NEW POST WILL BE REQUIRED. THE CONTRACTOR WILL ONLY BE REQUIRED TO REPAINT AND ADD THE LETTERING.

ON F.A.C. PROJECTS USE THE LETTERS F.A.C. INSTEAD OF F.A.P.



SITUATION

FEDERAL AID PROJECT MARKER



ELEVATION

RIGHT OF WAY MARKER

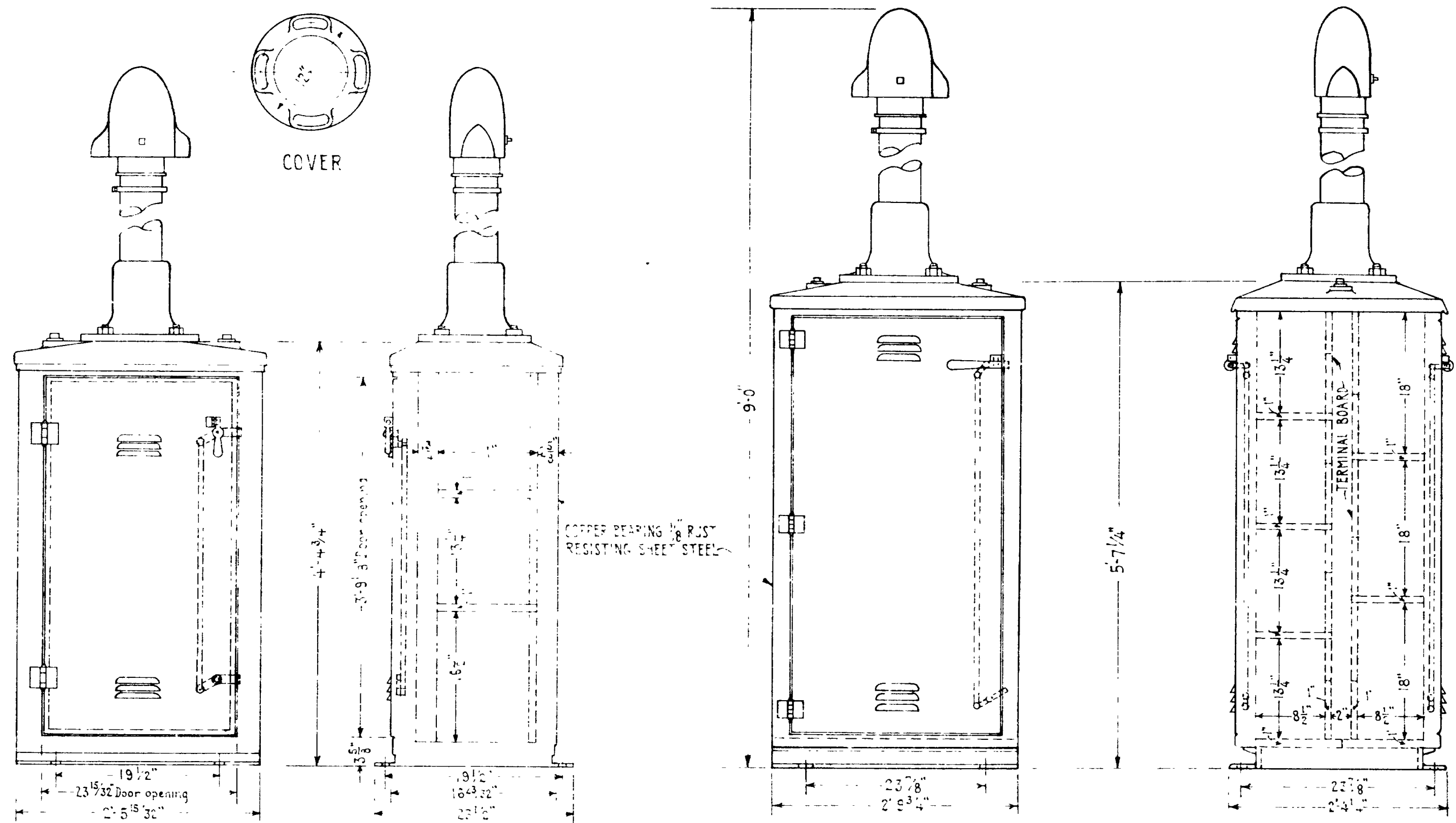
RIGHT OF WAY MARKERS ARE TO BE PLACED AT BEGINNING AND END OF ALL CURVES ON BOTH RIGHT OF WAY LINES, AND AT INTERVALS OF NOT MORE THAN 500 FT.

PREFERABLY NEAR SECTION LINES OR PROPERTY CORNERS. 1 1/2" GALVANIZED IRON PIPE MAY BE SUBSTITUTED FOR BOILER TUBE PIPE. DIMENSION "A" OF CAP TO BE ADJUSTED ACCORDINGLY.

UTAH STATE ROAD COMMISSION
SALT LAKE CITY - UTAH
W.L. ANDERSON DESIGN ENGINEER

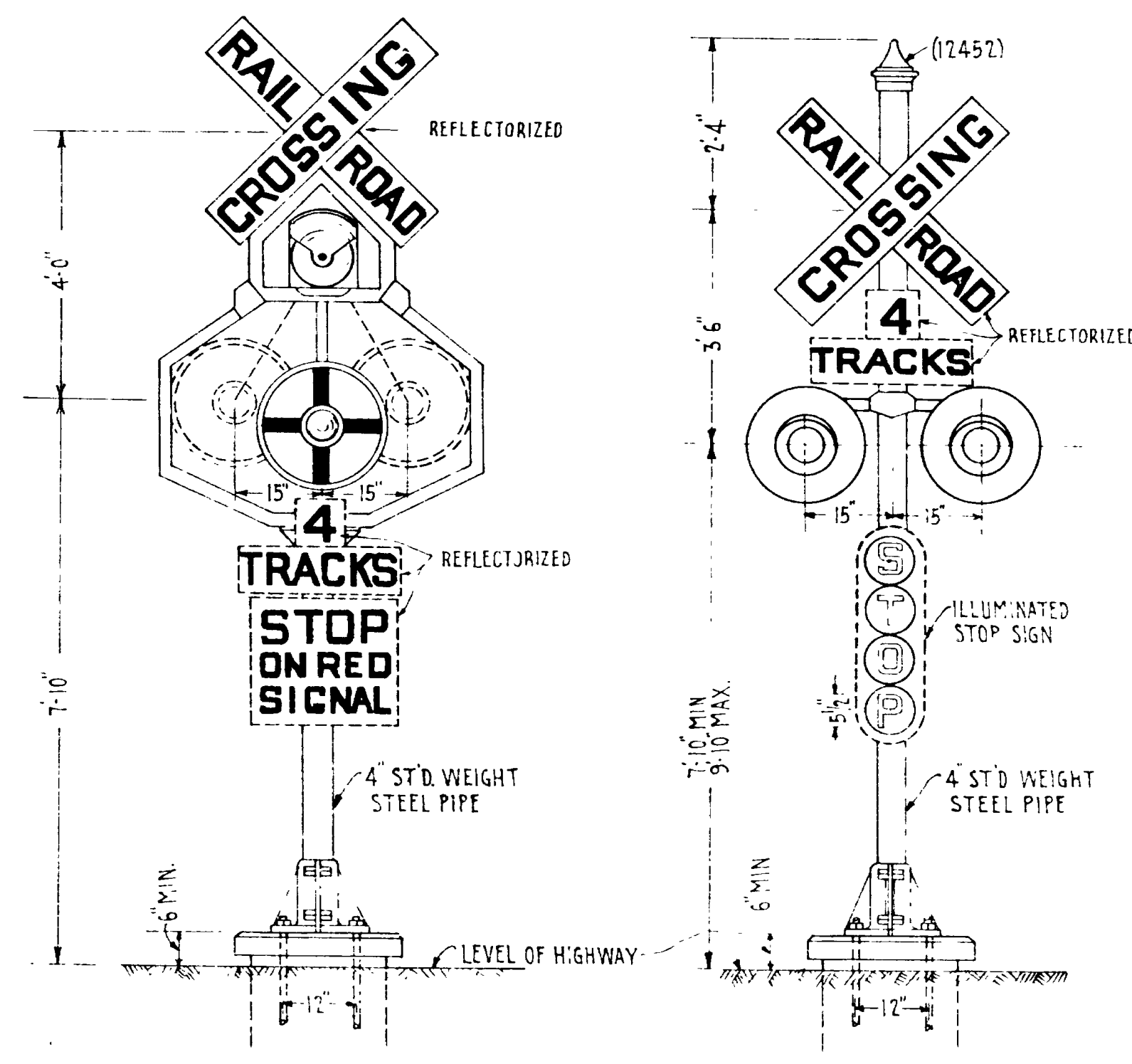
STANDARD FEDERAL AID AND RIGHT OF WAY MARKERS

W.L.A.
R.F.S. 5-3-39



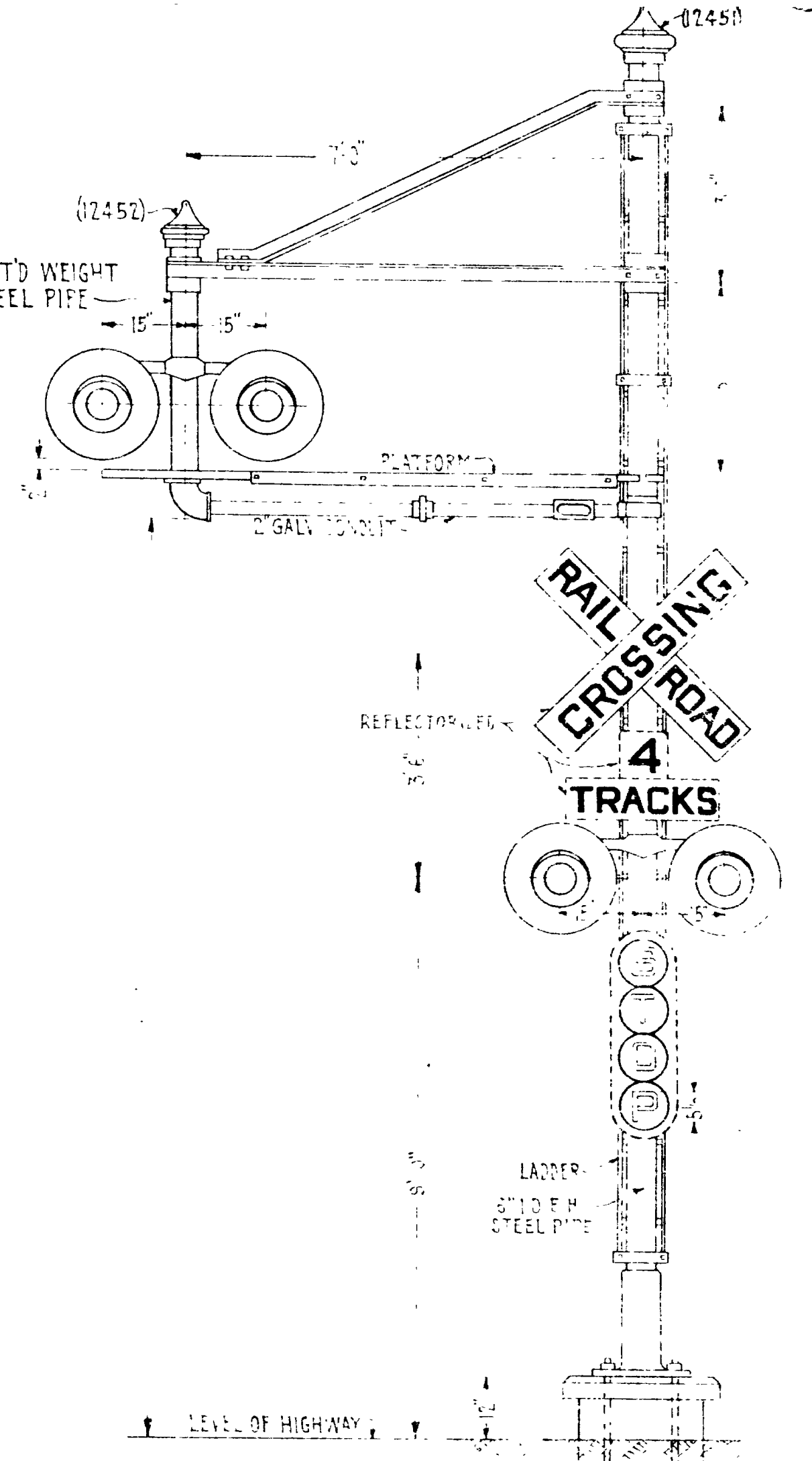
SINGLE INSTRUMENT CASE WITH PINNACLE - FIG. A

DOUBLE INSTRUMENT CASE WITH PINNACLE - FIG. B.

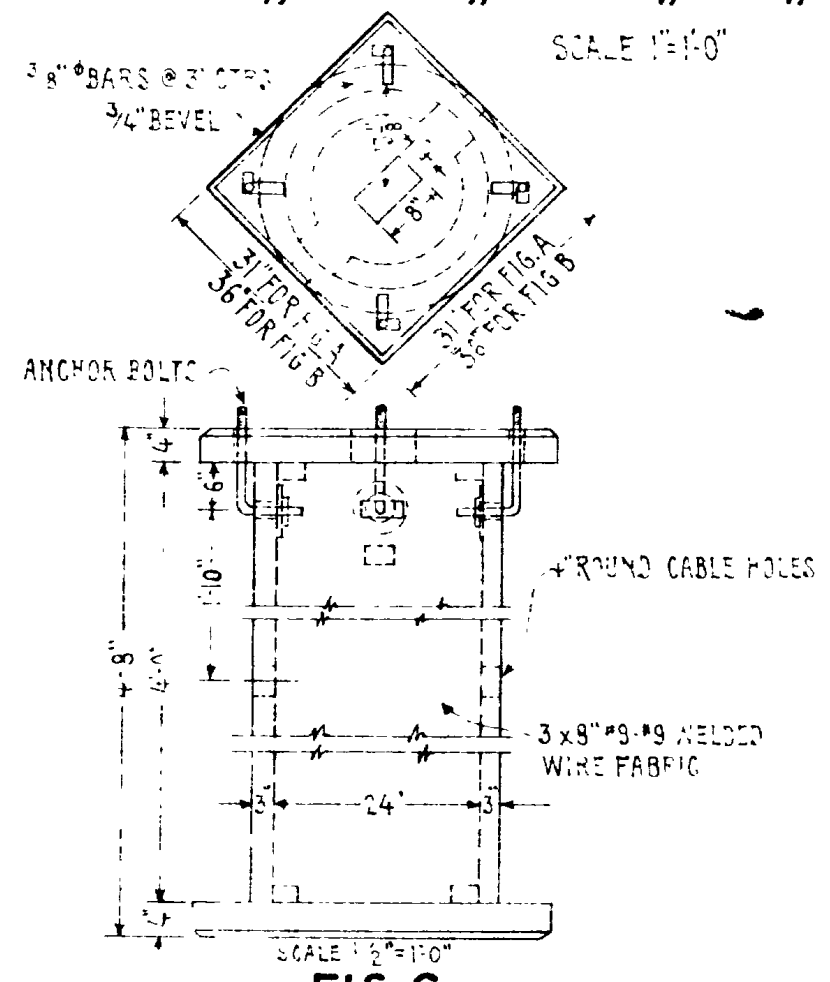


WIG WAG SIGNAL WITH "STOP ON RED SIGNAL" SIGN - FIG. D. WITH ILLUMINATED "STOP" SIGN - FIG. D. SCALE 1/2"=1'-0"

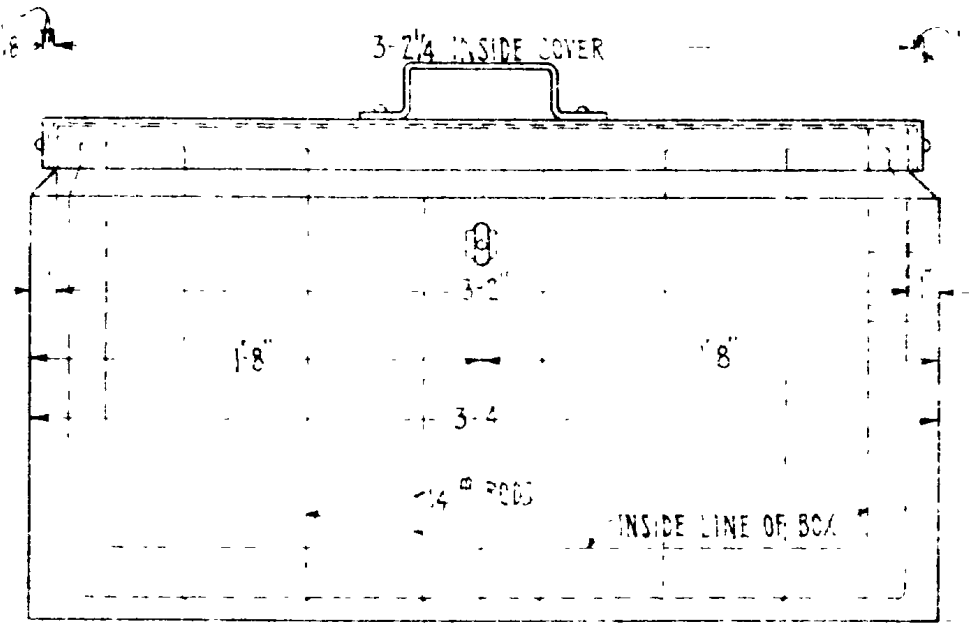
FLASHING LIGHT SIGNAL WITH "STOP ON RED SIGNAL" SIGN - FIG. E. WITH ILLUMINATED "STOP" SIGN - FIG. E. SCALE 1/2"=1'-0"



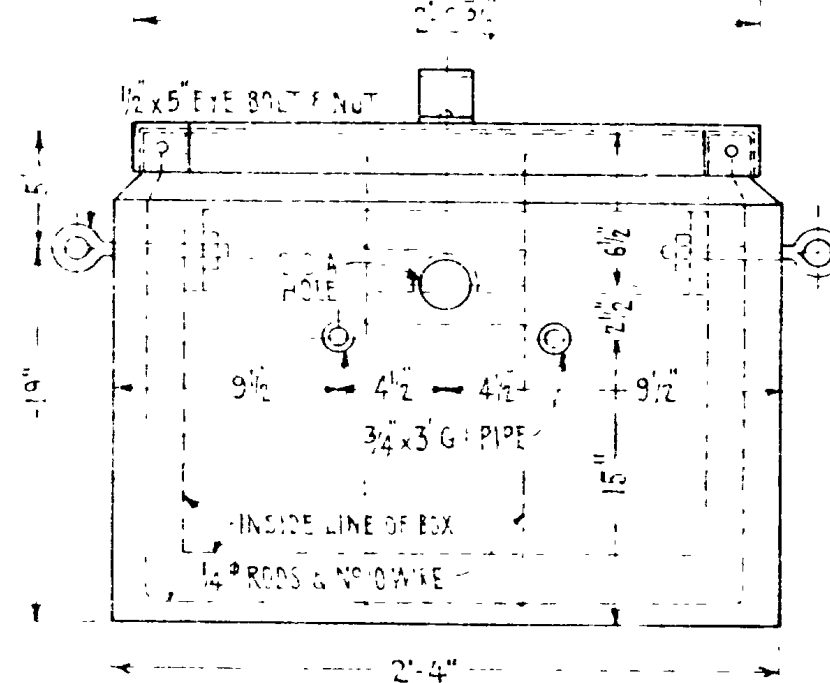
CANTILEVER TYPE FLASHING LIGHT SIGNAL WITH "STOP ON RED SIGNAL" SIGN - FIG. G. WITH ILLUMINATED "STOP" SIGN - FIG. G. SCALE 1/2"=1'-0"



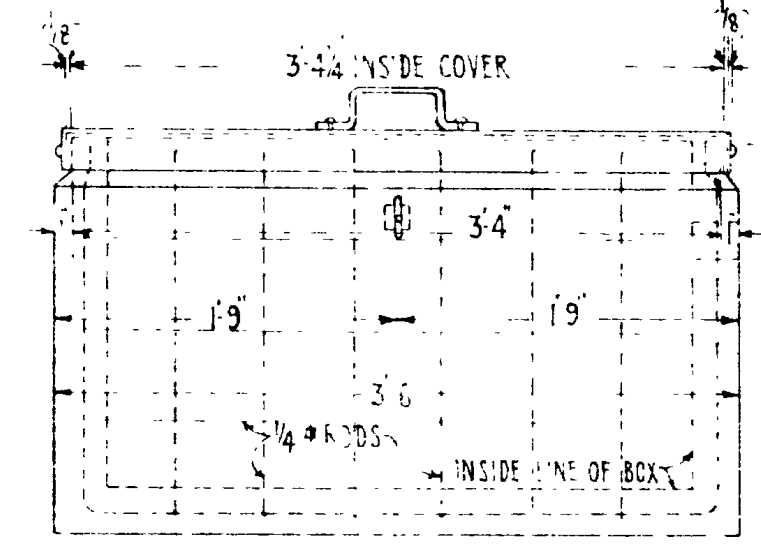
INSTRUMENT CASE FOUNDATION FOR FIG. A, USE 3" TOP & BOTTOM FOR FIG. B, USE 36" TOP & 31" BOTTOM



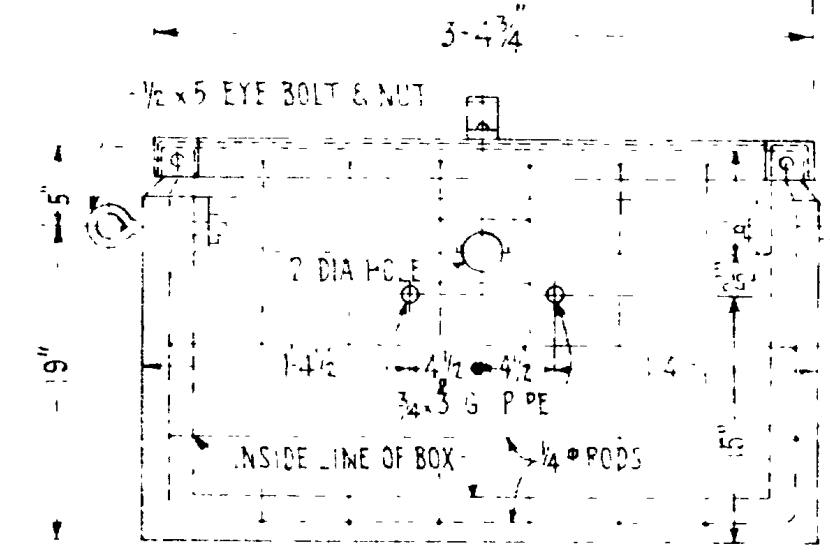
8 CELL CONCRETE BATTERY BOX - FIG. H. SCALE 1/2"=1'-0"



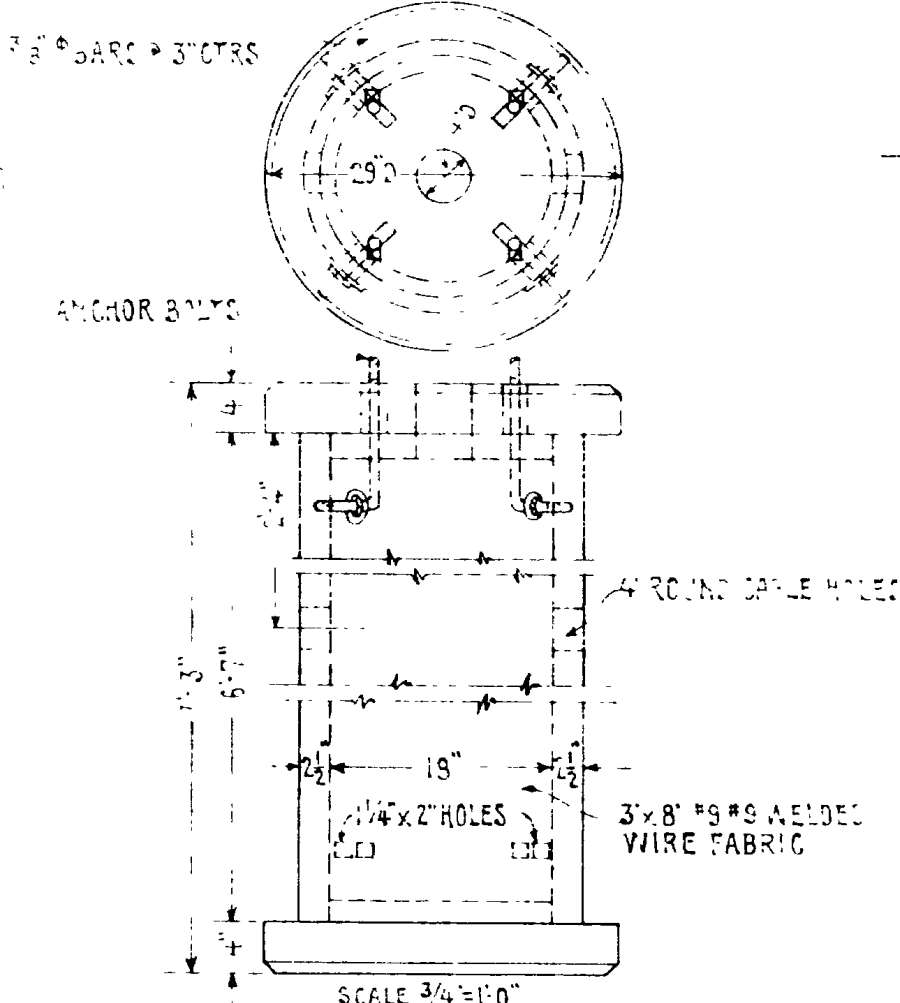
BATTERY RACK SCALE 1/2"=1'-0" PAINT WITH 2 COATS OF NEGRITE INSULATING PAINT



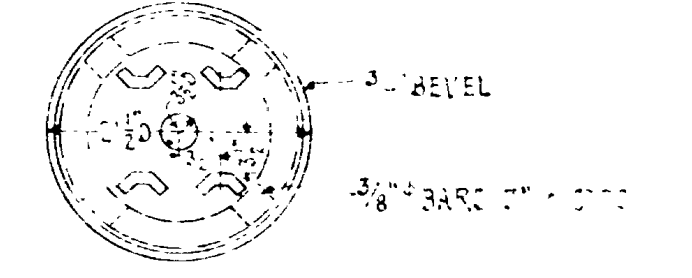
16 CELL CONCRETE BATTERY BOX - FIG. J. SCALE 1/2"=1'-0"



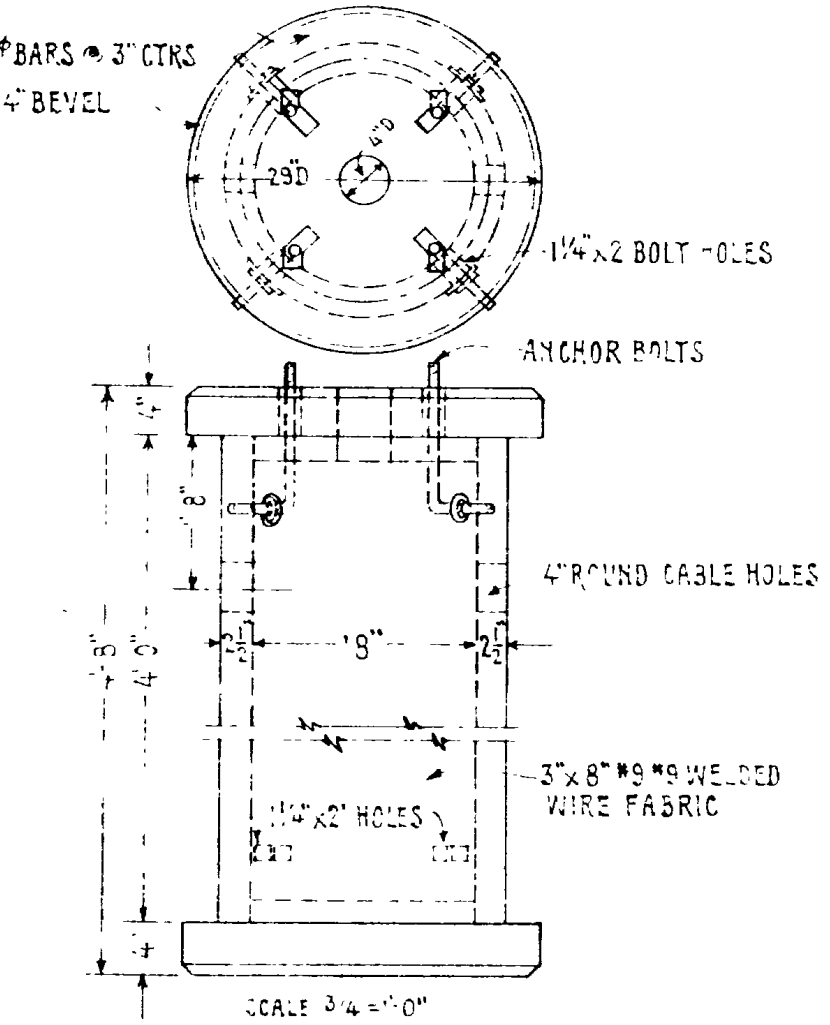
BATTERY RACK SCALE 1/2"=1'-0" PAINT WITH 2 COATS OF NEGRITE INSULATING PAINT



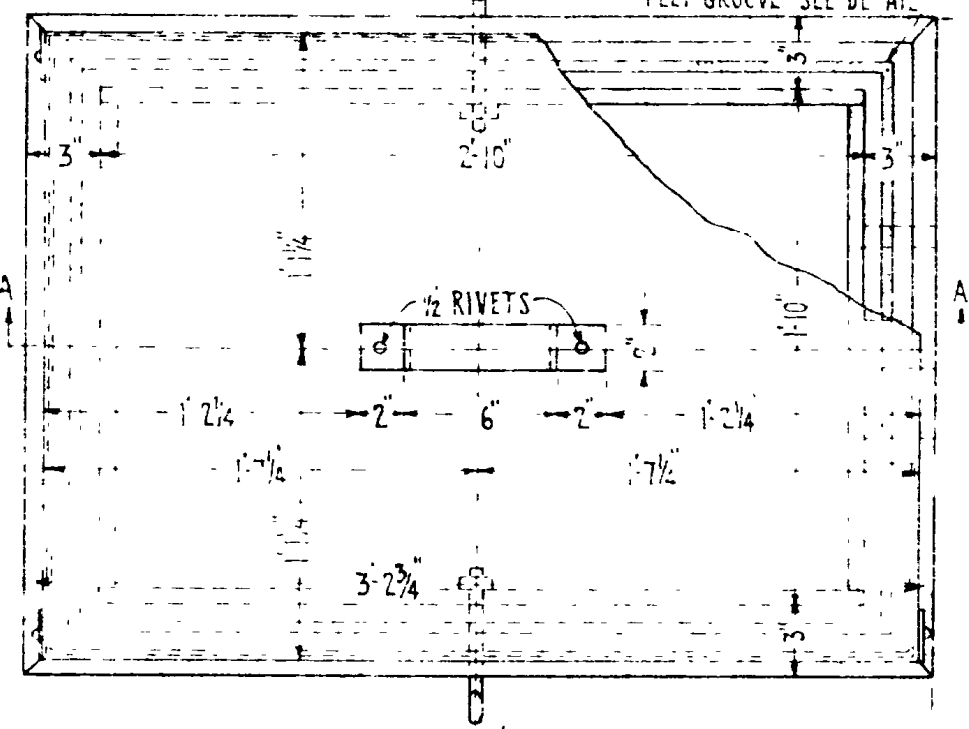
CANTILEVER & GATE FOUNDATION IDENT. GALL. EXCEPT FOR DOUBLE CABLE ENTRANCE FOR GATES. SCALE 3/4"=1'-0"



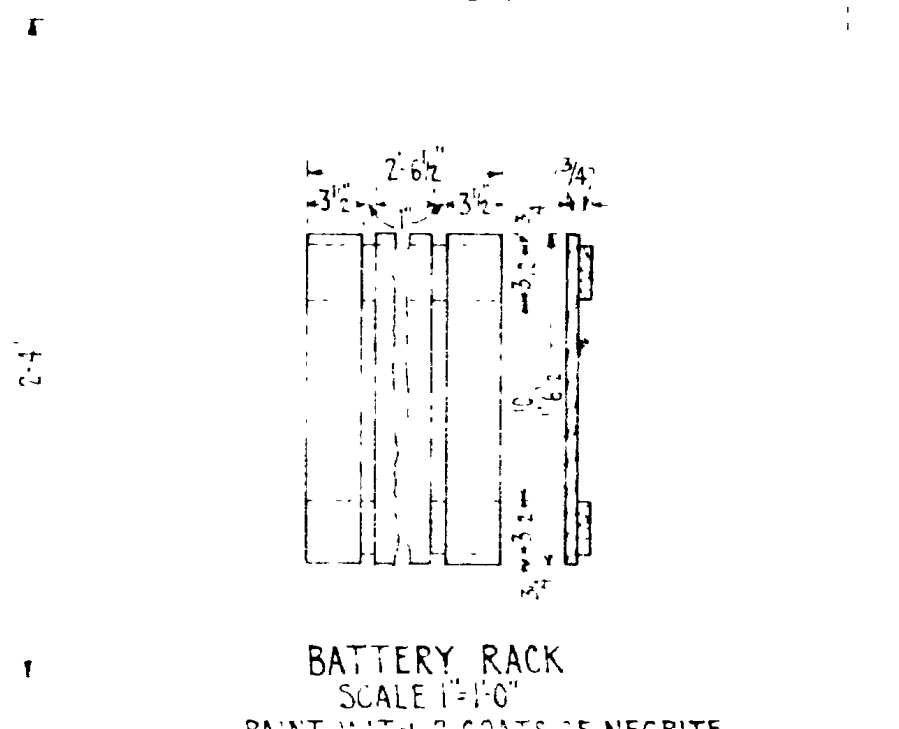
CABLE POST FOUNDATION SCALE 3/4"=1'-0"



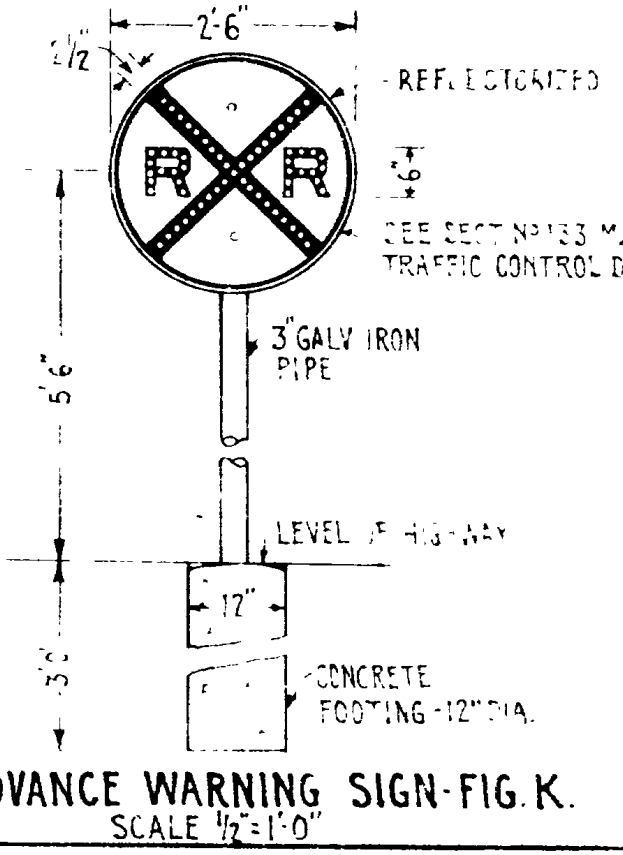
WIG WAG & FLASHER FOUNDATION FOR FIG. D & FIG. E. SCALE 3/4"=1'-0"



SECTION A-A



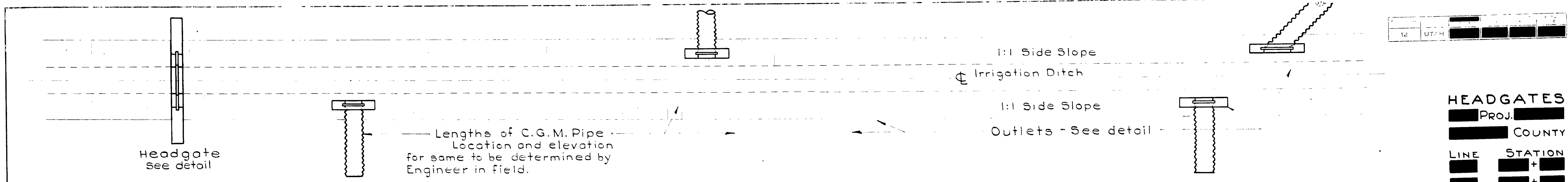
SECTION B-B 16 CELL CONCRETE BATTERY BOX - FIG. J. SCALE 1/2"=1'-0"



ADVANCE WARNING SIGN - FIG. K. SCALE 1/2"=1'-0"

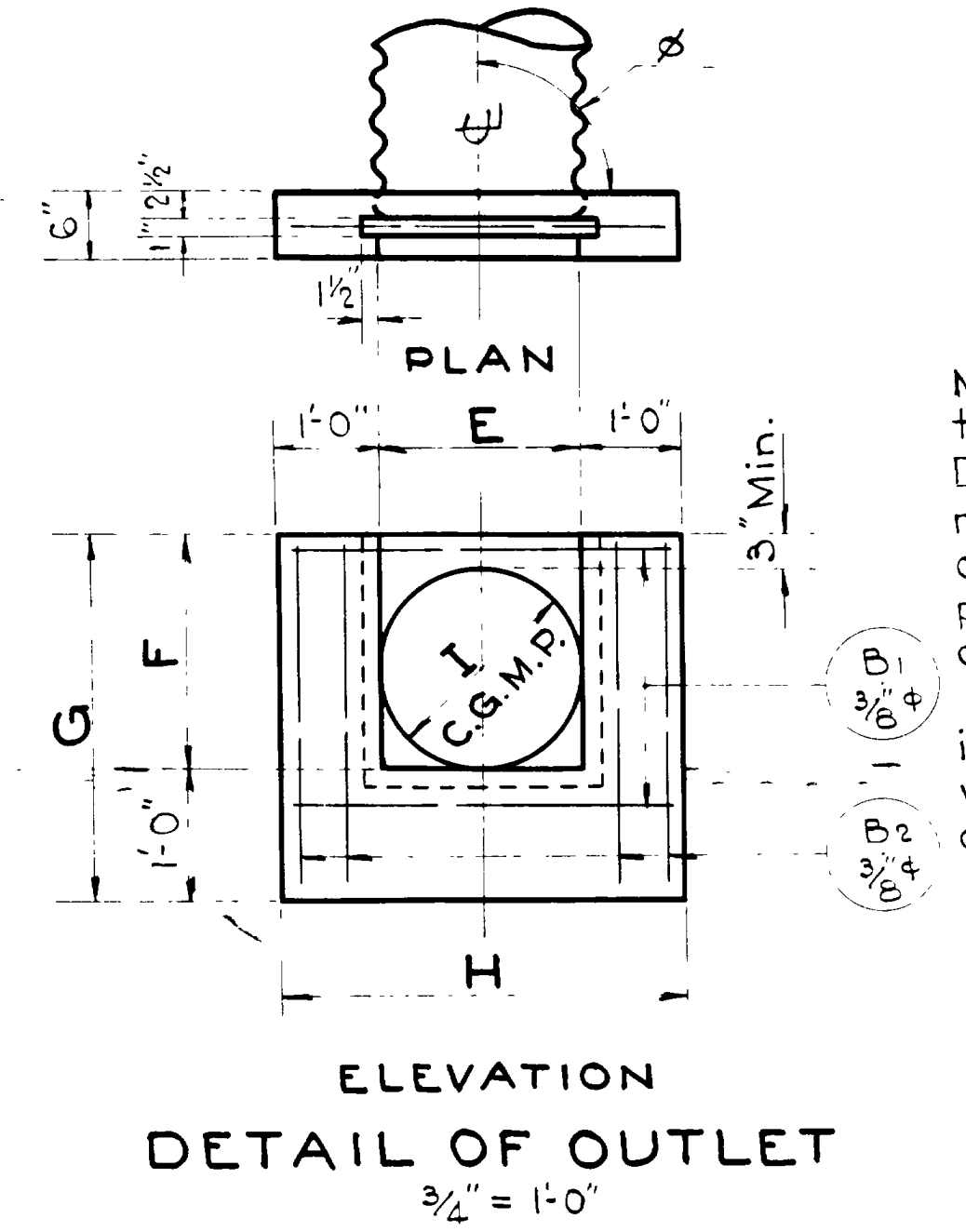
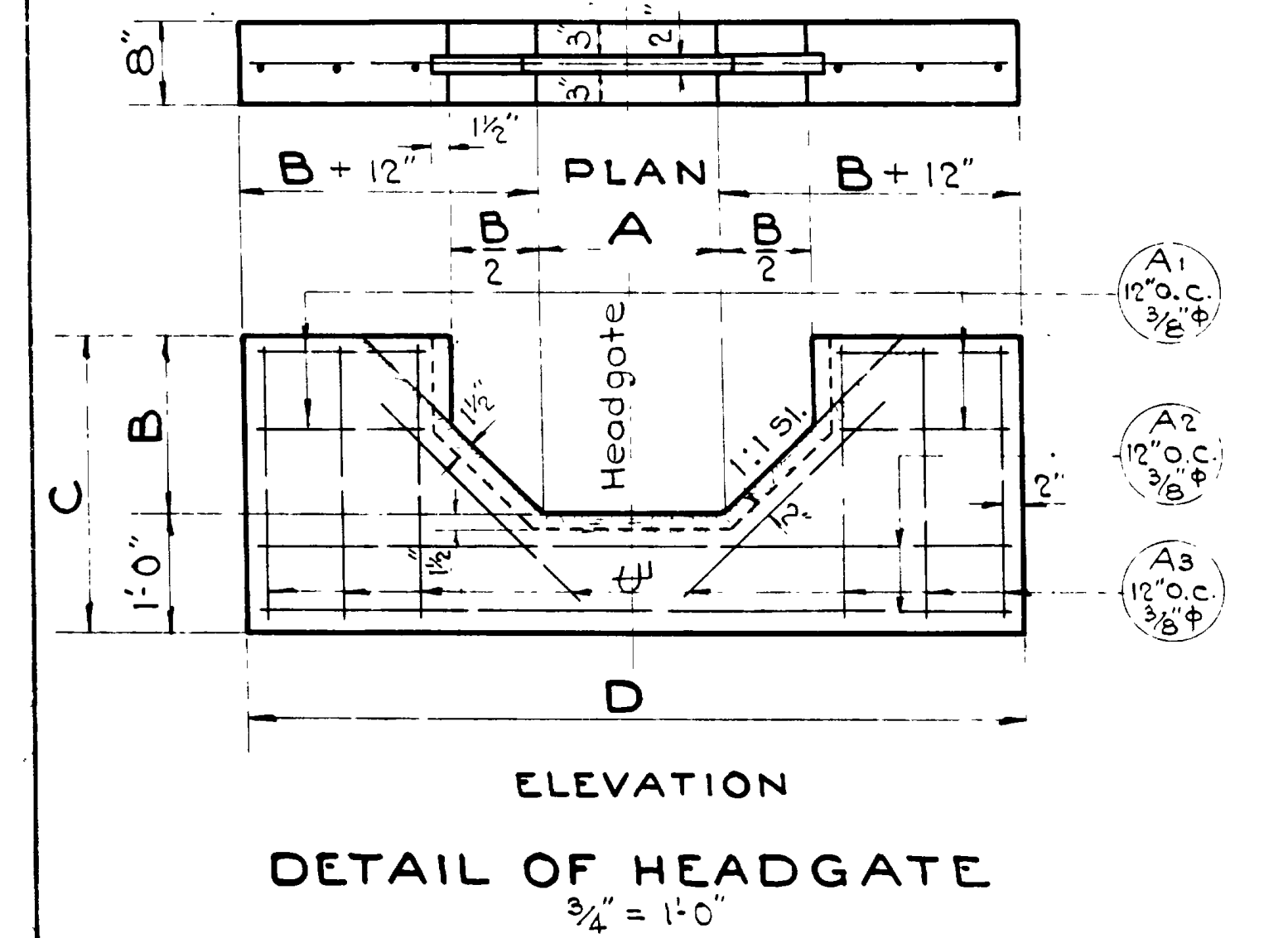
UNION PACIFIC RAILROAD CO. OFFICE OF SIGNAL ENGINEER OMAHA, NEB. HIGHWAY CROSSING SIGNAL DETAILS

SCALE: AS NOTED AUG 5, 1938 DRAWN BY: J. R. ... DESIGNED BY: L. P. ... APPROVED: J. W. ...



Lengths of C.G.M. Pipe Location and elevation for same to be determined by Engineer in field.

TYPICAL LAYOUT OF HEADGATE AND (C.G.M. PIPE OUTLETS or CONCRETE PIPE



Note: Outlet Gate to be made of 1" Douglas Fir. Payment to be included in unit price bid for concrete. When the gate is 18" or less in width, one handle only is required.

Note: Inlet Gate to be made of 2" Douglas Fir. Payment to be included in unit bid price for concrete.

GENERAL NOTES

For materials and workmanship see State Standard Specifications for Road and Bridge Construction, 1939 edition. All exposed edges to be chamfered 1" unless otherwise noted. Angle phi to be 90 degrees unless shown otherwise under 'E' dimension. A length of C.G.M.P. shall be furnished with each outlet Gate, to be paid for as provided under paragraph 5-11.6 of the specifications.

DETAIL OF OUTLET GATE DETAIL OF INLET GATE

HEADGATE SCHEDULE

Table with columns: LINE NO, DIMENSIONS (A, B, C, D), REINF. STEEL (A1, A2, A3 BARS), QUANTITIES (EXC. FOR STRUCT., CONCRETE CL. A', REINF. STEEL LBS.).

Table with columns: LINE NO, DIMENSIONS (A, B, C, D), REINF. STEEL (A1, A2, A3 BARS), QUANTITIES (EXC. FOR STRUCT., CONCRETE CL. A', REINF. STEEL LBS.).

OUTLET SCHEDULE

Table with columns: LINE NO, DIMENSIONS (E, F, G, H), PIPE DIA, REINF. STEEL (B1, B2 BARS), QUANTITIES (EXC. FOR STRUCT., CONCRETE CL. A', REINF. STEEL LBS.).

Table with columns: LINE NO, DIMENSIONS (E, F, G, H), PIPE DIA, REINF. STEEL (B1, B2 BARS), QUANTITIES (EXC. FOR STRUCT., CONCRETE CL. A', REINF. STEEL LBS.).

HEADGATES PROJ. COUNTY

Table with columns: LINE, STATION, and a series of empty boxes for recording data.

OUTLETS PROJ. COUNTY

Table with columns: LINE, STATION, and a series of empty boxes for recording data.

UTAH STATE ROAD COMMISSION STANDARD HEADGATES & OUTLETS P.W.M. R.W.I. As noted